

Fine Jewellery, Watches & Silver, 23rd Jan, 2025 09:30

- 1 A Victorian diamond-set enamel brooch of heart shape, comprising a double heart motif embellished with diamond accents, applied on a domed clear blue enamel ground within a rose-cut diamond frame, brooch fittings to the reverse, unmarked metal testing as silver on 9ct, 2.1 x 2.0 cm, 5.1 grams. **£200-300**



- 2 A pair of ruby and diamond earrings, of fan shape, each comprising six rows of channel-set calibr -cut rubies, embellished with single-cut diamonds, fitted with ear posts and clip-on backs, yellow metal struck '750', 1.6 cm drop, 6.2 grams.
With box and papers. **£250-350**



- 3 A large opal cocktail ring, the gadrooned triangular head collet-set with a free-formed polished precious opal displaying vibrant spectral play-of-colours, approximately measuring 20.4 x 12.2 x 4.8 mm, to a wide shank, in yellow metal stamped '18C', ring head 2.5 x 1.8 cm, size R, 10.4 grams. **£600-800**



- 4 A Victorian enamel and diamond-set padlock pendant, the body embellished with auricular and scrolling detailing around a central blue enamel panel, with an applied diamond-set forget-me-not, featuring a glass compartment to the reverse, the yellow metal padlock tested as 18ct gold, with a hinged push bar clasp; 10.6 grams **£400-600**



- 5 A garnet 'carbuncle' dress ring in 9ct gold, claw-set with an oval garnet cabochon of 20.0 x 15.2 x 16.8 mm, gallery and shoulders embellished in textured finish, leading to a flat shank, British convention marks, size P, 8.8 grams. **£200-300**



Fine Jewellery, Watches & Silver, 23rd Jan, 2025 09:30

- 6 A diamond-set bow brooch of pierced design, claw-set throughout with single and brilliant-cut diamonds, approximately 1.80ct total, mounted in unmarked white metal testing as 14ct, length 4cm, gross weight 8.23 grams. **£400-600**



- 7 A diamond set hinged bangle, comprising of a row of six brilliant cut diamonds flanked by ribbed motifs, estimated total diamond carat weight 0.30ct, secured with a tongue clasp and safety catch, set in yellow metal testing as 14ct, stamped 14k; Widest inner diameter 6.1cm; Total weight 9.3g. **£300-500**



- 8 A Continental early 20th-century floral fringe necklace, suspending a series of plastic tulips and hibiscus beads on beaded foliating branches, fastened with a screw clasp, 41.5 cm long. **£200-300**



- 9 A dress ring and a pair of earrings; the ring of twisted and textured design is in size M; with a pair of earrings of lattice design, fitted with ear post and hinged clips; both stamped 750 and signed Chimento, Italy. Total weight 16.8 grams (2) **£500-700**



- 10 Two beaded necklaces; to include a single-strand amber bead necklace with graduated butterscotch amber beads from 11.5 mm in length to the largest 33.0 mm, length 83.0 cm, 100.0 grams; and a red oval bakelite bead necklace of 78.0 cm, 86.7 grams. (2) **£300-500**



Fine Jewellery, Watches & Silver, 23rd Jan, 2025 09:30

- 11 A small collection of brooches; to include a George III mourning fichu pin, of rectangular form, braided hairwork with pierced monogram in a glazed compartment, framed by a row of split pearls and black enamel border, engraved with personal message on the reverse, 2.8 cm long; a late Victorian oval chalcedony cameo brooch in a cut-down collet; a green chalcedony intaglio depicting a soldier in helmet, set to a filigree surround, fitted with pin and bail; and a Wedgwood Jasperware brooch in Etruscan Revival surround marked '9ct'. (4) **£300-500**



- 12 A diamond-set plaque ring, sixteen transitional cut stones pave set in a grid, bordered with milgrain detail, estimated total diamond carat weight 0.48ct, the white metal setting joined to a tapered yellow metal shank testing as silver and 18ct, ring head approximately 1.1cm x 1.1cm, size O, 3.0g. **£200-300**



- 13 A pair of gem-set floral cluster earrings, each featuring an oval mixed-cut sapphire, of dark blue colour, surrounded by paste, set in yellow metal tested as 18ct gold, with post fittings and butterfly earring backs; 3.9 grams **£300-400**



- 14 A turquoise and diamond-set ballerina ring, the central turquoise sugarloaf cabochon, surrounded by two rows of round brilliant and tapered baguette diamonds, in a swept design, leading to a tapered wire gallery and white metal shank tested as 18ct gold, size P; 9.0 grams **£700-1,000**



- 15 An Edwardian gem-set cat stick pin, the shepherd's crook pin stem dangling a sculpted cat being picked up from its collar, front fully encrusted with rose-cut diamond chips and a ruby accent as eye, unmarked metal testing as silver and 9ct, 6.4 cm long, in an Alfred Clark case, 33 New Bond Street (1903-1916), 2.7 grams. **£200-300**



Fine Jewellery, Watches & Silver, 23rd Jan, 2025 09:30

- 16 A turquoise cluster dress ring, the central oval turquoise cabochon measuring approximately 10mm x 8mm and surrounded by round turquoise cabochons, in a floral design, claw-set in a yellow metal mount, with a tapered wire gallery, marked '750', size N1/2; 9.9 grams **£300-400**



- 17 Bulgari - a pair of B.Zero 1 hoop earrings, engraved on the outer edge, fitted with ear posts and omega clips, signed, in white metal struck with Italian assay marks '750', 1.7 cm drop, cased, 14.5 grams. **£600-800**



- 18 A diamond dress ring of abstract design, set with round brilliant and calibre cut diamonds, one diamond deficient, set in yellow metal testing as 14ct, ring head measures 1.2 x 2.1cm, size N; Total weight 6.0g. **£250-350**



- 19 A Victorian turquoise-set serpent crossover bracelet, comprising a hinged faceted body, tapering to the head encrusted with round turquoise cabochons and engraved with scrolled foliate patterns, eyes highlighted with garnets, unmarked yellow metal testing as 18ct, inner diameter 5.3 cm, 16.3 grams. **£500-800**



- 20 An Etruscan Revival ring set with a carved emerald, the round emerald cabochon of 8.8 x 8.8 x 6.4 mm carved with foliate patterns, collet-set to a scalloped surround and between heart-shaped shoulders, adorned with twisted cables and granulated details, to a twisted rope shank, unmarked yellow metal testing as 18ct gold, ring head 1.8 cm wide, size J, 9.7 grams. **£500-700**



Fine Jewellery, Watches & Silver, 23rd Jan, 2025 09:30

- 21 A diamond-set link bracelet, of reeded design, composed of eight rounded links with seven domed links in between, each rectangular link is channel-set with two rows of round-cut diamonds with an approximate total weight of 0.84ct, completed with a fold-over clasp, two-toned metal marked '850', overall length 17.0 cm, 26.1 grams. **£1,000-1,500**



- 22 A diamond-set eternity ring, featuring a single row of channel-set diamonds, with a mix of table-cut, baguette-cut and radiant-cut stones, estimated total diamond carat weight 1.21, in a white metal setting testing as platinum, size Q, 4.6 grams. **£300-500**



- 23 An Edwardian pearl and diamond star brooch/pendant, each of the eight rays inset with two rose-cut diamonds and terminating in a 4.7mm golden pearl, to a central similarly-cut diamond and 6.65mm pearl cluster, and interspersed by off-round slightly graduated pearls surmounted by a row of four collet-set rose-cut diamonds, suspended from a detachable suspensory loop set with five graduated pearls, detachable brooch fittings to the back, length 6.2cm, diameter 4.4cm, gross weight 26.96 grams. **£2,000-3,000**



- 24 A 9ct rose gold Albert chain with half sovereign fob, comprising a series of graduated curb links with swivel clasp ends, centrally suspending a T-bar and a 1912 half sovereign coin fob with soldered on scrolled surmount, British assay marks, overall length 40.0 cm, total weight of item 47.8 grams. **£800-1,200**



- 25 A turquoise-set bracelet, of abstract floral design, featuring three rectangular panels, each set with a round turquoise cabochon, surrounded by a floral and grooved border, leading to matching fancy links and a bolt ring clasp, marked '9ct', together with an attached safety chain; 19.6 grams **£350-450**



Fine Jewellery, Watches & Silver, 23rd Jan, 2025 09:30

- 26 An Edwardian fringe necklace set with peridot and pink tourmalines, knife-edged bars consisting of pear-cut and circular-cut peridots in claw mounts, alternating with graduated pear-cut pink tourmaline drops, suspending on a cable link chain and fastens with a tube clasp, yellow metal testing as 14ct, overall length 38.5 cm, 8.0 grams. **£300-500**



- 27 A pair of diamond stud earrings, each six-claw set brilliant-cut diamond, approximately 1.20cts total, to post fittings, mounted in yellow metal, stamped 750, gross weight 1.92grs **£200-400**



- 28 A pair of Victorian cufflinks in 18ct yellow gold, each oval panel comprising a bevelled edge and engine-turned pattern, figure of eight connectors, Birmingham 1884, 15.8 grams. **£400-600**



- 29 An amethyst and diamond dress ring, the claw set central elongated cushion-cut amethyst 1.65 x 1.29cm, encircled by polki-cut diamonds, ring head setting of scalloped edge design, to a shank of ridged design, set in white metal testing as 18ct, ring head 2.3 x 1.9cm, size R, 10.6 grams. **£200-300**



- 30 A pair of citrine and amethyst floral earrings, each flowerhead is formed by an amethyst centre with five scissors-cut citrine petals, clip-on fittings to the back, unmarked yellow metal testing as 9ct, 3.2 cm drop, 17.4 grams. **£200-300**



Fine Jewellery, Watches & Silver, 23rd Jan, 2025 09:30

- 31 A cultured pearl drop necklace of foliate design, cluster surmount composed of brilliant-cut diamonds and circular-cut sapphires, suspending a pearl drop of 11.5 mm long, attached to an 18ct yellow gold cable link chain, overall length 41.0 cm, London import marks, 6.4 grams. **£200-300**



- 32 A diamond-set closed bangle, of twist design, pavé-set with an array of brilliant-cut diamond accents, yellow metal stamped '750', inner diameter 6.2 cm, 13.9 grams. **£600-800**



- 33 An Art Deco diamond and emerald bar brooch, millgrained openwork mount comprising seven old-cut diamonds in raised collets, with an estimated total weight of 1.30ct, flanked by diagonal stripes set with calibré-cut emeralds, bordered with an array of rose-cut diamonds, brooch fittings and safety chain to the back, unmarked white metal testing as platinum, 7.5 cm wide, 8.8 grams. **£800-1,200**



- 34 A diamond daisy cluster ring, with an estimated total diamond weight of 2.15ct, centred with an old-cut diamond of 6.9 mm, surrounded with twelve marquise-cut diamonds, between bifurcated shoulders further accented with diamonds, to a tapering shank with sizing beads, unmarked white metal testing as platinum, ring head 1.6 cm wide, size I, 7.3 grams. **£1,500-2,000**



- 35 Two amber bead necklaces; a row of butterscotch graduated oval amber beads from 15.0 mm in length to the largest 35.0 mm, 77.0 cm long, 120.4 grams; another row of butterscotch graduated oval amber beads from 8.0 mm in length to the largest 26.0 mm, 77.0 cm long, 50.2 grams; and a loose screw clasp weighs 1.2 grams. (2) **£400-600**



Fine Jewellery, Watches & Silver, 23rd Jan, 2025 09:30

- 36 A Victorian gem-set dragonfly brooch, the thorax and abdomen set with graduated mixed-cut rubies, of pinkish-red colour, leading to diamond-set wings, in a yellow and white metal mount tested as 18ct gold and silver, with a brooch pin fitting to the reverse, measuring approximately 30mm x 20mm; 2.1 grams **£200-300**



- 37 A panel link bracelet set with split pearl and sapphire, the scrolled openwork links of oval shape, centred with a circular-cut sapphire, flanked by connecting links collet-set with split pearls, to a concealed box clasp and secured with safety chain, yellow metal marked '9ct', overall length 17.0 cm, 10.0 grams. **£200-300**



- 38 A floral gem-set crossover ring, featuring three staggered flower heads, each set with a round brilliant diamond, with surrounding petals set with emeralds, rubies and sapphires, leading to a D-shaped shank, in white metal tested as 14ct gold, size Q; 7.4 grams **£300-500**



- 39 A diamond-set necklace, of curvilinear form, partly constructed by articulated bar links, encrusted with brilliant-cut diamonds, with an estimated total weight of 2.50ct, completed with a box clasp, white metal testing as 18ct, pendant drop 10.5 cm, overall length 40.5 cm, total weight of item 29.6 grams. **£800-1,200**



- 40 A diamond-set eternity ring, with an estimated total carat weight of 2.03ct, featuring a single row of baguette-cut channel-set diamonds and possible replacements, in a white metal setting testing as 18ct, size K, 4.9 grams. **£400-600**



Fine Jewellery, Watches & Silver, 23rd Jan, 2025 09:30

- 41 A diamond-set line bracelet, with an estimated total diamond weight of 0.60ct, comprising a series of saltire crosses flanking brilliant-cut diamonds in illusion settings, completed with a concealed tongue clasp with push-in thumbpiece and safety catch, yellow metal marked '10k', overall length 18.5 cm, 10.1 grams. **£200-400**



- 42 A diamond-set knot ring, of ribbed design, highlighted with a row of diamond embellishment estimated total weight at 0.28ct, unmarked yellow metal testing as 18ct, ring head 2.5 cm, size M, 11.6 grams. **£400-600**



- 43 Tiffany & Co. - a pair of diamond cluster earrings in platinum, with an estimated total diamond weight of 0.60ct, each claw-set with three brilliant-cut diamonds and fitted with ear post and guardian back, London assay marks, 6.5 mm wide, 3.2 grams. Boxed with travel pouch, no papers. **£800-1,200**



- 44 A ruby and diamond dress ring, gypsy mount centred with an oval ruby cabochon of 10.5 x 8.9 x 5.8 mm, set between trumpeted shoulders with baguette-cut diamonds, unmarked yellow metal testing as 18ct, size L½, 11.1 grams. **£600-800**



- 45 Kutchinsky - a pair of cufflinks set with sapphires; of geometric design with bark effect finish, channel-set with calibr -cut sapphires, fitted with toggle backs, in 18ct white gold, London 1965, signed and cased, motfi 2.3 cm wide, 27.6 grams. **£500-800**



Fine Jewellery, Watches & Silver, 23rd Jan, 2025 09:30

- 46 A diamond line bracelet in 18ct yellow gold, with an estimated total 1.20ct of diamonds, comprising sixty round brilliant-cut diamonds in articulated square links, completed with a concealed clasp with figure-of-eight safety catch, Italian and London import marks, overall length 19.0 cm, 10.3 grams. **£500-700**



- 47 A coral brooch, collet-set with a round coral cabochon of 11.0 mm, in a scalloped surround with a pin-struck border, further to a bevelled bow-shaped mount, later-added gilt brooch fittings, mount testing as 9ct, 2.8 cm wide, 3.8 grams in total. **£150-250**



- 48 Garrard & Co. - a pearl-set vine brooch in 18ct gold, featuring round cultured pearls in mount realistically modelled after a bunch of grapes and textured vine leaves, brooch fittings to verso, stamped sponsor's mark for Garrard and London import marks 1976, measuring 4.3 x 3.5 cm, in a Garrard & Co. Ltd case, total weight of item 9.7 grams. **£300-500**



- 49 A diamond-set snake ring, featuring a yellow-tinted old pear-cut diamond with an estimated weight of 0.85ct, flush-set to its head, with wrapped around textured body, unmarked yellow metal testing as 18ct, size N, 20.3 grams. **£800-1,200**



- 50 An old-cut diamond trilogy ring, claw-set with three old-cut diamonds with an estimated total weight of 2.80ct, to a D-profile shank in unmarked white metal testing as platinum, size L½, 3.7 grams. **£2,000-3,000**



Fine Jewellery, Watches & Silver, 23rd Jan, 2025 09:30

- 51 A two-toned link necklace of modular design, comprising a series of stylised oval and cross hinged links alternating with white and yellow tones, completed with a tongue clasp with push-in thumbpiece and safety catch, Italian assay marks '750' and registration mark, 44.0 cm long, 41.5 grams. **£2,000-3,000**



- 52 A diamond line bracelet, comprising a row of articulated link mounts, each claw-set with a round brilliant-cut diamond, thirty-three diamonds with an estimated total weight of 1.28ct, completed with a tongue clasp and figure of eight safety catch, white metal marked '750', overall length 18.5 cm, 13.4 grams. **£400-600**



- 53 A turquoise cluster fringe necklace, comprising nine graduating floral clusters composed of oval and navette-shaped turquoise cabochons, flanked by trefoil turquoise motifs, on a fancy link chain individually set with navette turquoise cabochons, completed with a hook clasp, yellow metal marked '750', overall length 44.0 cm, 44.2 grams. **£1,500-2,000**



- 54 A diamond ring of floral design, estimated total diamond carat weight 0.07ct, set in yellow and white metal testing as 18ct gold and platinum respectively, stamped '18ct Plat', makers mark for Bravingtons, in original box, size J ½; Total weight 3.0g. **£200-300**



- 55 Of Royal Naval interest - an early 20th Century diamond naval crown brooch, millegrain-set throughout with rose-cut diamonds, approximately 0.20ct total, mounted in white metal stamped PLAT, width 2.5cm, gross weight 3.01 grams. **£250-350**



Fine Jewellery, Watches & Silver, 23rd Jan, 2025 09:30

- 56 A Victorian emerald and diamond-set brooch, depicting a flower, featuring three emeralds accented by old-cut diamonds, of graduated sizes, in a bi-colour metal mount, tested as 9ct gold and silver, measuring approximately 21mm; 1.8 grams **£200-300**



- 57 Chopard - a 'Happy Bubble' diamond-set pendant in 18ct white gold, the diamond-set centre circle encasing a loose diamond, with an estimated total weight of 0.11ct, signed and numbered, Swiss convention marks, drop length 3.0 cm, 6.6 grams. **£600-800**



- 58 A gentleman's diamond set band ring, estimated total diamond carat weight 0.21ct, comprising of four princess-cut diamonds to a tapering yellow metal band, 5.5mm at widest point, testing as 18ct, size T, weight approximately 8.4 grams. **£400-600**



- 59 A diamond set pendant, of quadrilateral design, pavé and claw-set with round brilliant diamonds, with an estimated carat weight of 0.38ct, bordered with millegrain detailing, in a white metal marked 'K18', to a fine box-link chain marked 'K18'; 4.0 grams **£200-300**



- 60 A diamond-set cluster ring, with twisted rope details, adorned with illusion-set brilliant-cut diamonds, between knife-edged shoulders to flat shank, white plated on yellow metal testing as 18ct, ring head 2.0 cm wide, size Q, 6.9 grams. **£200-300**



Fine Jewellery, Watches & Silver, 23rd Jan, 2025 09:30

- 61 A sapphire and rose-cut diamond cluster ring, collet-set with an oval-cut sapphire of dark blue colour, measuring 9.6 x 6.8 x 4.2 mm, surrounded by eight rose-cut diamonds, to a D-profile shank struck with Italian assay marks '750', ring head 2.1 x 1.7 cm, size N, 8.5 grams. **£600-800**



- 62 An opal-set negligée necklace, suspending two large teardrop opal cabochons of 4.0 x 1.8 cm, claw-set to intricate foliate surmounts, and attached to a later fancy link chain with beads and floral details, spring-ring fastening, pendant mounts testing as platinum, white metal chain testing as silver, overall length 43.0 cm, 17.1 grams. **£150-250**



- 63 Kutchinsky - a gent's signet ring in 18ct yellow gold, the square ring head cast with initials 'DI', between reeded shoulders to a tapering shank, signed and hallmarked, London 1961, ring head 2.0 x 1.7 cm, size R, 18.9 grams. **£600-800**



- 64 A single-row cultured pearl necklace with diamond cluster clasp, comprising a row of cream-coloured round pearls with rose overtones, 7.8 mm in diameter, hand-knotted to a daisy head box clasp encrusted with old-cut diamonds, with an estimated total weight of 0.96ct, in yellow metal testing as 18ct, overall 42.0 cm long, in an unassociated Cartier travel pouch, 34.1 grams. **£500-700**



- 65 An Edwardian peridot and diamond entourage ring, centred with an oval-cut peridot of bright yellowish-green colour, measures 11.8 x 9.8 x 5.1 mm, encircled by fourteen old-cut diamonds, to a D-profile shank marked '18', ring head measures 1.8 x 1.5 cm, size K, 4.8 grams. **£600-800**



Fine Jewellery, Watches & Silver, 23rd Jan, 2025 09:30

- 66 A Madonna pendant and a pair of turquoise-set ornaments; the Madonna medallion embellished with turquoise cabochon accents, to a tapering bail and a pin attached, in yellow metal marked 'K18', 3.8 cm drop; together with a pair of filigree ornaments set with turquoise cabochon drops, with hook fittings, unmarked yellow metal testing as 18ct, 5.8 cm drop length; Total weight of items 12.5 grams. (2) **£400-600**



- 67 A Victorian amethyst and enamel brooch, the central oval-shaped amethyst set within a 12-claw setting, measuring approximately 16.1 x 12.2 x 5.3 mm, to a blue, white and green enamel double border with fleur-de-lys design, mounted in yellow metal testing as 18ct gold, dimensions 2.3cm - 2.7cm, gross weight 7.49 grams. **£200-300**



- 68 A curb link bracelet along with a T-bar; the curb link bracelet terminated with a suspension loop and a swivel clasp, measuring 20.0 cm long and stamped '9c'; together with a T-bar segment in metal stamped '9c', 6.0 cm long; Total weight of items 14.5 grams. **£200-300**



- 69 A gem-set frog brooch, the body set with a mabé pearl, of bluish tones, with emerald-set eyes, surrounded by rose-cut diamonds, in a bi-colour metal mount, tested as 18ct gold and silver, measuring approximately 32mm long, with a brooch pin fitting to the reverse; 11.2 grams **£400-600**



- 70 A sapphire and diamond cluster ring, estimated total diamond carat weight 0.96ct, the central collet-set sapphire of deep blue colour, encircled by eight claw-set round brilliant-cut diamonds, to an 18ct gold mount, London, 1999 with Millenium mark, size L, boxed; Weight 4.3g. **£300-500**



Fine Jewellery, Watches & Silver, 23rd Jan, 2025 09:30

- 71 A diamond-set line bracelet, with approximately 3.64ct of diamonds in total, comprising of sixty-four round brilliant-cut diamonds, with push bar clasp and additional safety clasps, in white metal squared claw mounts testing as 18ct, measuring 19.5cm; Total weight 7g. **£400-600**



- 72 A sapphire and diamond dress ring, claw set octagonal cut sapphire, with angular shoulders pave set with two rows of brilliant cut diamonds, estimated total diamond carat weight 0.33ct, set in yellow metal testing as 18ct, size N ½; Total weight 11.6g. **£400-600**



- 73 A pair of diamond-set ear clips, of scrolling ribbon design, the curved rows set with old-cut diamonds, in white metal mounts tested as silver, measuring approximately 23mm, with ear clip fittings to the reverse; 11.8 grams **£200-300**



- 74 An Edwardian gem-set pendant of floral design, openwork mount with millgrained edges centred with a square table-cut pink tourmaline, further adorned with four cushion-cut aquamarines, and rose-cut diamond accents on the flowerhead motifs, suspending a baroque pearl drop, to a diamond-set bail, unmarked metal testing as 14ct, 4.6 cm drop, 2.8 grams. **£200-300**



- 75 An opal and diamond cluster ring, centred with a precious opal cabochon of 7.4 x 5.8 x 3.2 mm, with weak play-of-colour on a light ground, encircled with twelve rose-cut diamonds, set to a D-profile shank, unmarked yellow metal testing as 18ct, ring head 1.4 x 1.2 cm, size L, 3.2 grams. **£400-600**



Fine Jewellery, Watches & Silver, 23rd Jan, 2025 09:30

- 76 A diamond-set bar brooch, openwork mount comprising daisy head motifs highlighted with single-cut diamond accents, framed within round and teardrop-shaped frames, brooch fittings to the back, bi-coloured metal stamped with Italian assay marks '750', 5.5 cm long, 6.7 grams. **£300-500**



- 77 A diamond-set pendant, comprising a round brilliant-cut diamond with an estimated weight of 0.85ct, collet-set to an oval mount with hinged bail, yellow metal marked '18ct', 2.3 cm drop, 7.0 grams. **£1,000-1,500**



- 78 An emerald and diamond ballerina ring, centred with a rectangular portrait-cut emerald with canted corners, measuring 9.9 x 9.0 x 2.8 mm, to a tiered surround set with single-cut and baguette-cut diamonds, in unmarked white metal testing as 14ct, ring head 2.3 cm wide, size L½ (with sizing beads), 9.6 grams. **£600-800**



- 79 An angular closed bangle of cut-out design, yellow metal testing as 14ct, height of bangle 3cm, internal diameter 6.2cm; Total weight 52.9g. **£1,000-1,500**



- 80 A diamond cluster ring, with an estimated total weight of 2.28ct, centred with a large round brilliant-cut diamond in claw-setting, superimposed on a frame of nine brilliant-cut diamond surround, to a later-added wide hinged shank, in yellow metal marked '18K', ring head 1.4 cm, size Q, 13.7 grams. **£2,500-3,500**



Fine Jewellery, Watches & Silver, 23rd Jan, 2025 09:30

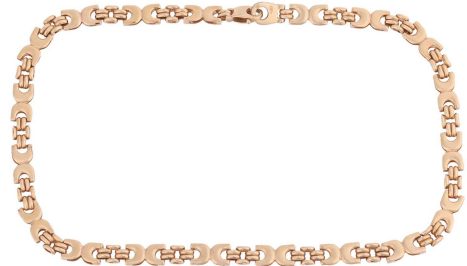
- 81 A pair of gem-set cluster stud earrings, of floral spray design, composed of multiple flowerheads amongst foliate surround, encrusted with single-cut diamonds, circular-cut rubies, emeralds and sapphires, fitted with ear post and butterfly backs, white metal marked '18c', with maker's mark 'CS' with an arrow, 2.0 cm wide, 12.2 grams. **£700-900**



- 82 A chimera ring in the style of Ilias Lalaouinis, the lions head featuring two faceted ruby eyes, with textured surface detail, followed by a ridged wrap-around ring shank with blue enamel detail, yellow metal marked 'Greece' and 'K18', size I, 10.0 grams. **£300-400**



- 83 A fancy link necklace in 9ct yellow gold, comprising a series of panther links alternating with stylised crescent motifs, finished with a lobster clasp, British import marks, overall length 41.0 cm, 23.1 grams. **£350-550**



- 84 A pair of diamond-set ear clips, of oval design, composed of overlapping diamond-set spirals, featuring round brilliant diamonds of graduated sizes, in yellow metal settings marked '14K' and '585', measuring approximately 23mm x 18mm, with hinged ear clips to the reverse; 13.0 grams **£300-500**



- 85 Anish Kapoor for Bulgari - a B.zero1 ring, of concave design with the edge engraved with the brand logo, signed and numbered, bi-coloured metal marked 'Steel' and struck with Italian assay marks '750', size 59 (UK size R), 11.5 grams. No box no papers. Designed by Anish Kapoor for the B.zero1 collection's 10th anniversary in 2010 **£200-300**



Fine Jewellery, Watches & Silver, 23rd Jan, 2025 09:30

- 86 A pearl-set floral brooch, of a stylised flower form with textured petals surrounding round cultured pearl stamen, brooch fittings to the reverse, pink metal marked 'K14', 5.5 cm long, 11.7 grams. **£300-500**



- 87 Chanel - two pairs of drop earrings by Victoire de Castellane from the 1990 Spring Summer collection, of twisted rope design, one set with large faux pearls, the other with green and blue Gripoint glass, signature and clip-on fittings to the back, approximately 13.0 cm long. (2) **£400-600**



- 88 A turquoise-set bracelet, featuring two rows of open circle links, connected by claw-set round turquoise cabochons, in yellow metal tested as 14ct gold, to a push bar clasp and safety chain; 11.1 grams **£400-600**



- 89 An Etruscan Revival ring, decorated with twisted cablework and granulated details all around, yellow metal marked '585' with maker's mark 'H', width 10.2 mm, size U, 7.2 grams. **£150-250**



- 90 Garrard & Co. - a leaf brooch in 18ct gold, realistically modelled as a maple leaf, brooch fittings to verso, stamped sponsor's mark for Garrard and London import marks 1977, measuring 4.8 x 3.7 cm, in a Garrard & Co. Ltd case, 6.3 grams. **£200-300**



Fine Jewellery, Watches & Silver, 23rd Jan, 2025 09:30

- 91 A Victorian diamond-set gypsy ring, star-set with an old-cut diamond with an estimated carat weight of 0.40ct, in a yellow metal mount, marked '18', size M1/2; 6.7 grams **£300-500**



- 92 Cartier - a Panthère de Cartier tie pin, modelled as a stylised panther head with a collar, full pave-set with brilliant-cut diamonds, with emerald eye and onyx nose, with unassociated guardian back, signed and numbered, white metal stamped with French eagle head assay mark indicating 18ct, 12.1 x 10.7 mm, 4.0 grams. **£800-1,200**



- 93 A ruby and diamond spray brooch, comprising a ruby and diamond flowerhead cluster, to a curvilinear mount encrusted with graduated diamonds, brooch fittings to the reverse, bi-coloured metal testing as 18ct, 6.5 x 2.9 cm, 10.0 grams. **£400-600**



- 94 A diamond-set hinged bangle in 18ct gold, of belt and buckle design by Annoushka, the square belt buckle clasp embellished with diamond accents, with tension mechanism, Edinburgh hallmarked, signed, inner diameter 6.0 cm, 7.4 grams. **£300-500**



- 95 Boodles - a Classic Raindance diamond ring in platinum, composed of three bands collet-set with various sized brilliant-cut diamonds, with an estimated total weight of 1.53ct, adjoining to a flat shank, signed and numbered, London 2008, size M, 12.0 grams.
With box, no papers.
RRP £12,300 **£3,000-5,000**



Fine Jewellery, Watches & Silver, 23rd Jan, 2025 09:30

- 96 A diamond set bar brooch, pavé-set with 25 old-European and transitional cut stones, white metal border with milgrain detail testing as platinum, to a yellow metal body with a locking C clasp testing as 18ct, brooch length 6.5cm, brooch width 0.3cm, 4.3 grams. **£400-600**



- 97 A diamond trilogy ring in platinum, with an estimated total weight of 0.78ct, graduated old European-cut diamonds in a coronet setting between tapered shoulders, Sheffield 1999, size M½, 2.9 grams. **£400-600**



- 98 A late 18th-century ivory portrait brooch in filigree surround, the oval ivory panel depicting a bust of a lady wearing strands of pearl in her hair, in a filigree braided surround, with a glazed compartment to the verso, keeping a lock of hair, fitted with tube hinged pin and C-catch, unmarked yellow metal testing as 18ct, 5.2 x 4.2 cm, 22.9 grams. Ivory certification reference 36298DP7 **£200-300**



- 99 A peridot dress ring in 18ct gold, collet-set with a cushion-cut peridot of 10.7 x 9.0 x 6.1 mm, between bifurcated shoulders to a grooved shank, London 2017, size O, 5.4 grams. **£200-300**



- 100 Two pearl brooches; the first wreath composed of six 4.1mm pearls, interspersed by engraved leaves, mounted in yellow metal stamped 14K diameter 3.4 cm; together with a costume jewellery brooch by Sphinx numbered A150, with central plaque inset with a 3mm simulated pearl, to several rope twist and reeded borders, the outer edge decorated with eighteen 2.6mm simulated pearls, mounted in yellow metal, diameters 2.9cm, gross weight 6.00 grams. (2); **£200-300**



Fine Jewellery, Watches & Silver, 23rd Jan, 2025 09:30

- 101 A two-tone twisted rope necklace in 9ct gold, comprising a faceted ball chain entwined with two snake chains, completed with a lobster clasp, British and Italian hallmarks, 43.5 cm long, 8.2 grams. **£200-300**



- 102 A ruby and diamond line bracelet, comprising thirteen circular-cut rubies in articulated illusion settings, alternating with single-cut diamond spacers, leading to hinged links and a conforming box clasp, unmarked white metal testing as 9ct, overall length 17.5 cm, 11.7 grams. **£300-500**



- 103 A diamond dress ring, featuring an old-cut diamond of 5.7 mm with an estimated weight of 0.64ct, in a buttercup mount, between foliate shoulders further embellished with old-cut diamonds, to shank testing as 18ct, size P½, 3.2 grams. **£400-600**



- 104 A diamond solitaire ring in 18ct gold, illusion set with a round brilliant cut diamond, estimated diamond carat weight 0.37ct, stamped with convention marks, size N, 3.2g. **£400-600**



- 105 A flat snake chain necklace, completed with a push button clasp, yellow metal stamped and testing as 14ct, measuring approximately 40cm in length, total weight 24.6g. **£600-800**



Fine Jewellery, Watches & Silver, 23rd Jan, 2025 09:30

- 106 A diamond-set gypsy ring, set with one central old-European cut diamond, estimated diamond carat weight 0.6ct, set in gently tapering yellow metal band testing as 18ct, width of band approximately 0.9cm, size R ½, 5.9g. **£400-600**



- 107 A floral necklace and earrings ensuite set with carved coral, turquoise, citrine and diamond; the necklace with articulated drop pendant, comprising a large oval turquoise cabochon and an oval-cut citrine, suspending a carved coral flowerhead of 4.0 cm, embellished with oval-cut citrine and diamond accents, and further dangling a large turquoise drop below, adorned with intricate foliate surround fully set with white and brown brilliant-cut diamonds, attached to a mesh link necklace embellished with diamonds in collets as well as claw settings, completed with a textured box clasp in white metal marked '750', pendant drop 13.5 cm, overall length 44.0 cm; together with a pair of conforming earrings with post and omega clip fittings, mount testing as 18ct, ear post testing as platinum-plated, 8.5 cm drop length; 196.5 grams **£4,000-6,000**



- 108 Tiffany & Co. - a pair of diamond stud earrings in platinum, with an estimated total diamond weight of 0.92ct, each containing a brilliant-cut diamond of 0.46ct in claw setting, fitted with ear post and guard back, London 2016, 2.9 grams. No packaging, with paperwork and diamond certificates. **£1,000-1,500**

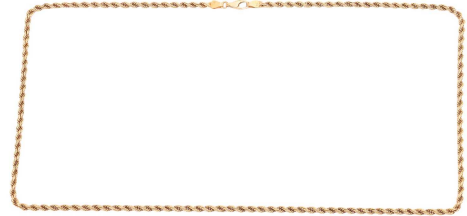


- 109 A diamond Riviere necklace, set with an array of brilliant-cut diamonds graduating in size, with an estimated total weight of 20.00ct, in concave and articulated collets, to a box clasp with push-in thumbpiece, white metal marked 'K18WG', overall length 40.5 cm, 36.9 grams. **£5,000-7,000**



Fine Jewellery, Watches & Silver, 23rd Jan, 2025 09:30

- 110 A rope twist necklace, in yellow metal marked '18ct', measuring approximately 63cm, leading to a lobster clasp; 16.8 grams **£550-650**



- 111 A Tahitian pearl demi-parure, comprising of a Tahitian pearl pendant necklace, a pair of Tahitian pearl drop earrings and a dress ring; The Tahitian pearl necklace approximately 1.02cm wide, capped by a diamond set surmount, pearl and cap length approximately 1.75cm, to a 0.8cm long diamond set bail with milgrain detail, to a white metal chain approximately 44.5cm long, white metal setting and chain testing as 18ct; The Tahitian pearl drop earrings each approximately 1.05cm wide, diamond-set white metal surmounts of teardrop form, the pearls capped with a scalloped white metal, to post fittings with butterfly backs, white metal testing as 18ct, total length of earrings 2.2cm; The Tahitian pearl dress ring featuring central pearl approximately 1.06cm wide, flanked by pavé-set diamond shoulders, set to white metal shank testing as 18ct, ring height 1.3cm, size P; Total weight 17.8g (3). **£500-700**



- 112 A diamond eternity ring, with an estimated total diamond weight of 1.30ct, bar-set with twenty-three round brilliant-cut diamonds, in unmarked white metal testing as platinum, size K½, 4.7 grams. **£250-350**



- 113 A diamond line bracelet of spiral design, with approximately 1.25ct of brilliant-cut diamonds in articulated links, fastened with a concealed tongue clasp with push-in thumbpiece, in yellow metal marked '14K', overall length 18.2 cm, 8.6 grams. **£200-300**



Fine Jewellery, Watches & Silver, 23rd Jan, 2025 09:30

- 114 Two gem-set dress rings; comprising an opal and ruby floral cluster ring, the central opal cabochon surrounded by ten rubies, in a yellow metal setting tested as 9ct gold, size Q1/2; together with a navette-shaped ring, the central turquoise surrounded by paste, to a yellow metal shank tested as 18ct gold, size R; 9.1 grams (2) **£200-300**



- 115 A diamond daisy head cluster ring, featuring a tinted yellowish-brown old-cut diamond of 5.5 mm, collet-set within a scalloped surround encrusted with ten old-cut diamonds, totalling estimated diamond weight 1.14ct, between tapered shoulders to D-section shank, ring head 12.0 mm, size O, 3.1 grams. **£800-1,200**



- 116 A diamond, ruby and sapphire dress ring, of scrolled design, encrusted with single-cut diamonds, and further accented with sapphires and rubies, to a pierced scrollwork gallery, in unmarked pink metal testing as 14ct, ring head 3.0 x 2.0 cm, size H½, 6.9 grams. **£200-300**



- 117 An Edwardian peridot and split pearl guirlande brooch, featuring scrolling floral detailing in a yellow metal mount marked '15ct', with a safety chain and 'C' clasp fitting to the reverse, 4.0 cm drop; together with a pair of modern drop earrings in 9ct gold, the central peridot surrounded by pink tourmaline and seed pearls, to shepherd hook ear wires, Birmingham 2005, 4.5 cm drop; Total weight of items 12.7 grams (2). **£200-300**



- 118 A double-row diamond-set line bracelet, composed of twenty square links, each claw-set with four round brilliant diamonds, with a total estimated diamond carat weight of 4.00ct, in a white metal mount tested as platinum, with a concealed push clasp and safety clasp, measuring approximately 16.5cm; 21.9 grams **£1,500-2,000**



Fine Jewellery, Watches & Silver, 23rd Jan, 2025 09:30

- 119 A single diamond in a claw mount, with a totalling weight of 0.90ct, the brilliant-cut diamond of 6.0 mm in the six-claws setting, further set with six smaller diamonds on the edge, unmarked white metal testing as 18ct, 1.0 gram. **£400-600**



- 120 A large Victorian ivory portrait brooch; the oval plaque painted with a portrait of a woman in a white bonnet and blue gown, the frame with ribbon details at cardinal points, set in unmarked yellow metal testing as 14ct, 8.4 x 7cm; Total weight 48.7g.
Ivory certification reference KNMM5P5R **£200-300**



- 121 A large opal and diamond pendant on chain, featuring a teardrop-shaped precious opal cabochon, displaying vibrant spectral play-of-colours on a light ground, approximately measuring 29.0 x 13.6 x 5.0 mm, in a claw setting to bail embellished with brilliant-cut diamonds weighing a total of 0.64ct, in unmarked white metal testing as 14ct, 4.2 cm drop length; on a 50.0 cm long box link chain with Italian assay marks '750'; total weight of item 8.6 grams. **£800-1,200**



- 122 An Edwardian diamond-set lavalier necklace, of spray design, comprising old-cut diamonds in claw settings, and further embellished with single-cut diamond accents throughout, suspending from a diamond surmount, attached to a fine cable link chain with tube clasp, unmarked metal testing as 14ct gold and platinum, pendant drop length (from surmount_ 5.0 cm, overall length 38.0 cm, 9.7 grams. **£700-900**



- 123 A large cameo ring, rectangular ring head collet-set with a carved onyx panel depicting a side profile of Athena, between shoulders with lotus motifs, to a flat shank in unmarked yellow metal testing as 14ct, ring head 2.5 x 1.6 cm, size U, 13.9 grams. **£200-300**



Fine Jewellery, Watches & Silver, 23rd Jan, 2025 09:30

- 124 An Austro-Hungarian enamel pendant of horseman, of Renaissance Revival design, an armed warrior on a white horse holding a scimitar, embellished with table-cut diamond and a circular-cut ruby, with two suspension loops, in gilt metal stamped with partial maker's mark 'S' possibly for Simon Grünwald, 3.4 x 2.7 cm, 14.1 grams.
A very similar Renaissance object on display at the British museum:
<https://wb.britishmuseum.org/MCN4119#1454017001> **£300-500**



- 125 A diamond solitaire ring and matching wedding band, the solitaire ring featuring a round brilliant diamond, with a carat weight of 0.76ct and colour and clarity grading of D, VS1, in a semi-bezel setting, to a crossover-style platinum mount, size M, together with a 3mm platinum court shaped band, size M; 11.5 grams
Together with a GIA laboratory grading report, dated February 07, 2001 **£1,000-1,500**



- 126 Two Victorian gem-set rings; to include a garnet-topped-doublet and diamond ring set in 18ct gold, Birmingham 1883, with box, size N; Opal, garnet and paste ring, one stone deficient, yellow metal stamped 15ct, Birmingham 1900, with box, size O; Total weight 4.7g (2) **£200-300**



- 127 A gem-set swan brooch by Black Starr & Frost, the body set with a baroque pearl, the neck pave-set with old brilliant-cut diamonds, approximately 0.15ct total, the head decorated with black and pink enamel, the eyes highlighted by collet-set circular cabochon rubies, to a polished yellow metal beak, stamped 14K, maker's mark BS&F for Black Starr & Frost, width 4.6cm, gross weight 13.57 grams. **£500-700**



- 128 A grey star sapphire and diamond dress ring, featuring an oval cabochon of a light grey sapphire cabochon, approximately measures 12.6 x 8.8 x 8.7 mm, between foliate shoulders with diamond accents, in a wired gallery leading to a flat shank, white metal marked '14K', size L, 5.7 grams. **£200-300**



Fine Jewellery, Watches & Silver, 23rd Jan, 2025 09:30

- 129 A George III bracelet with enamel and seed pearl clasp, comprising four strands of off-round cultured pearls, approximately 7.0 mm in diameter, with bar spacers, to a navette-shaped clasp with glazed panel encapsulating seed pearl initials on a blue enamel ground, within a pearl surround, unmarked pink metal testing 14ct, 18.5 cm long, total weight of item 54.0 grams. **£300-500**



- 130 A prasiolite and diamond dress ring, containing a cushion-cut prasiolite of pale green colour, collet-set between shoulders accented with diamonds, to a tapering flat shank with twisted rope design, in white metal marked '14K 585', size O, 7.2 grams. **£250-350**



- 131 A diamond-set ring, featuring baguette-cut and round brilliant diamonds, with an estimated carat weight of 1.19ct, claw-set in three alternating rows, to a white metal mount marked '750' and 'K18', size N1/2; 3.5 grams **£300-500**



- 132 A sapphire bracelet, six oval sapphires flanked by white metal granulated motif and figure of eight yellow metal links, fastened with lobster clasp, yellow metal testing as 14ct, length approximately 18cm, cased; Total weight 4.9g. **£200-300**



- 133 A gem-set signet ring, the square head inlaid with an onyx plaque, comprising an applied double-headed eagle motif with a diamond accent, to a mount with strapwork design, between fleur-de-lis shoulders to a tapering shank, yellow metal marked '585 14K', ring head 1.6 x 1.5 cm, size V, 13.5 grams. **£400-600**



Fine Jewellery, Watches & Silver, 23rd Jan, 2025 09:30

- 134 An early 20th century diamond set bar brooch, set with seven old-European cut diamonds, estimated total diamond carat weight 0.77ct, collet set with milgrain detail and interspersed with knife edge bars, French hallmarks for 950 platinum (1912-1994) and 18ct gold (1838-present), set to a lockable C clasp, inside scratched 'x1732 P13 -/-', brooch length 6.4cm, brooch width 0.4cm, 4.3 grams. **£500-700**



- 135 A synthetic colour change sapphire and white spinel dress ring, of bi metal cluster design, the central synthetic colour change sapphire approximately 13.9 x 9.9mm, claw set and flanked by a textured yellow metal border of foliate design, the border interspersed with white metal kite shaped forms, each set with a round mixed-cut white spinel, white and yellow metal testing as 18ct, ring head 2.3 x 2.0cm, size Q, 9.7 grams. **£200-300**



- 136 A pair of insect-inspired drop earrings, in 9ct yellow gold, featuring ladybird surmounts, each suspending a honeybee on a trace link chain, measuring approximately 45mm, with earring post fittings to the reverse, hallmarked Edinburgh, 1979; 9.6 grams **£200-400**



- 137 A late Victorian chalcedony intaglio brooch, set to the centre with an oval green chalcedony plaque, intricately chased with the side profile of a Roman emperor in laurel wreath, in a twisted rope collet with further gadrooned surround, flanked between two grotesque gargoyle faces, brooch fittings to the back, unmarked yellow metal testing as 18ct, measuring 3.2 cm across, 6.6 grams. **£200-300**



- 138 A sapphire and diamond cluster ring, centred with an oval cut sapphire of dark blue colour, approximately 9 x 7 x 3.1mm, surrounded by two levels of round brilliant cut diamonds, estimated total carat weight 0.92ct, claw set in white metal on a ridged tapered shank testing as 18ct, marked 750, ring head approximately 17 x 15mm, size M; Total weight 6.1g. **£600-800**



Fine Jewellery, Watches & Silver, 23rd Jan, 2025 09:30

- 139 A pair of diamond-set hoop earrings, with an estimated total diamond weight of 3.20ct, each hoop fully encrusted with round brilliant-cut diamonds in a pavé setting, hinge opening and tension closure, white metal stamped '750', drop length 4.5 cm, 11.9 grams. **£1,000-1,500**



- 140 A gentleman's diamond set band ring, estimated total diamond carat weight 0.21ct, comprising of four princess-cut diamonds to a tapering yellow metal band, 5.5mm at widest point, testing as 18ct, size S, weight approximately 8.9 grams. **£400-600**



- 141 A ruby and diamond dress ring in 18ct gold, of a stylised foliate design, set with a marquise-cut ruby and two smaller diamond accents, between crossover shoulders to a D-profile shank, Birmingham 1992, size J, 3.5 grams. **£200-300**



- 142 Five gem-set rings; including a cluster ring centred with a cushion-cut ruby, and flanked by shoulders of six round-cut rubies, set in yellow metal testing as 9ct, size O½; An emerald and diamond ring, the central square cut emerald flanked by two diamond shoulders, estimated total diamond carat weight 0.26ct, claw set in yellow and white metal testing as 18ct, size L; An emerald and diamond crossover ring, estimated total diamond carat weight 0.12, claw set in 9ct gold, size O½; An emerald and diamond band ring, set with four round-cut emeralds interspersed by three diamonds, pavé-set in 9ct gold, size M ½; An emerald and diamond ring of tiered crossover design, set with two round-cut emeralds, one stone deficient, flanked by two white metal bands featuring a grain set diamond, white and yellow metal testing as 10ct, size N ½; Total weight 10.7g (5). **£200-300**



Fine Jewellery, Watches & Silver, 23rd Jan, 2025 09:30

- 143 A diamond cluster single earring, centred with an old european cut diamond of 5.2 mm, with an estimated weight of 0.54ct, in a buttercup setting encompassed with a frame of single-cut diamonds, fitted with a post and omega clip, unmarked white metal testing as 18ct, 1.1 cm wide, 2.25 grams. **£200-300**



- 144 A smoky quartz dress ring, the smoky quartz measuring approximately 22mm x 16mm, claw-set in a crown setting, to bifurcated shoulders, in yellow metal tested as 18ct gold, size P1/2; 10.7 grams **£200-300**



- 145 A single dress clip, set with six oval sapphire cabochons, along with rose-cut diamond accents, to a bevelled surround with scrolled top, clip fittings to the back, white metal marked '585', 2.5 x 2.0 cm, 7.4 grams. **£200-300**



- 146 A three-stone diamond crossover ring, estimated total diamond carat weight 0.98ct, the three diamonds claw set in white metal testing as 18ct, to an 18ct yellow gold shank of crossover design, size L, with box, 5.0 grams. **£600-800**



- 147 A diamond solitaire ring, claw set with an old-cut diamond, estimated diamond carat weight 0.65ct, on a tapered white metal shank testing as 18ct and stamped '750', size M, 2.7 grams. **£400-600**



Fine Jewellery, Watches & Silver, 23rd Jan, 2025 09:30

- 148 A Victoria Diamond Jubilee medal in a later locket on chain, medal by George William de Saulles, veiled bust to the left and young head to the reverse, in a glazed locket with granulated border, marked '9ct', to a gold filled chain, in a leather medal case. 22.6 grams weighable. **£500-700**



- 149 A synthetic colour-changing sapphire dress ring, comprising a large oval-cut synthetic colour-changing sapphire of 21.7 x 15.5 x 7.8 mm, collet-set to a corrugated surround, in a gallery pierced with foliate patterns, flat shank in yellow metal marked 'K18', ring head 2.8 x 2.3 cm, size T, 13.1 grams. **£200-300**



- 150 A jade pendant on chain together with another pendant; a jadeite drop pendant capped and suspending from a 71.0 cm long three-row belcher link chain testing as 18ct, with three spacers testing as 9ct; together with a carved and dyed bowenite pendant, measuring 4.0 cm drop; Total weight of items 27.6 grams. (2) **£600-800**



- 151 An Art Deco emerald and diamond plaque ring, a scalloped ring head centred with a rectangular cut emerald of vivid green colour, approximately 5.8 x 3.5 x 2.5mm, surrounded by eight old European cut diamonds, estimated total diamond carat weight 0.87ct, flanked by eight calibre cut emeralds, the plaque setting with milgrain detail affixed to a white metal shank testing as 18ct and platinum, ring head approximately 13.5 x 12.2mm, size N; Total weight 2.4g. **£800-1,200**



- 152 A gem-set ladybird brooch, the domed body set with five emeralds, thirty-one rubies and twenty-one diamonds, in a yellow metal setting tested as high carat, flanked by eight grooved legs, with a brooch pin fitting to the reverse, the brooch measuring approximately 23mm long; 8.5 grams **£500-700**



Fine Jewellery, Watches & Silver, 23rd Jan, 2025 09:30

- 153 A gem-set double serpent ring, of crossover design, doubly terminated with serpent heads, embellished with circular-cut rubies and CZs, to a flat shank with a planished finish, unmarked yellow metal testing as 18ct, size T, 5.7 grams. **£300-500**



- 154 A diamond-set three-stone ring, with three princess-cut diamonds, measuring approximately 3mm each, with an estimated total carat weight of 0.54ct, in semi-bezel settings, to a platinum shank, size O1/2; 5.1 grams **£300-500**



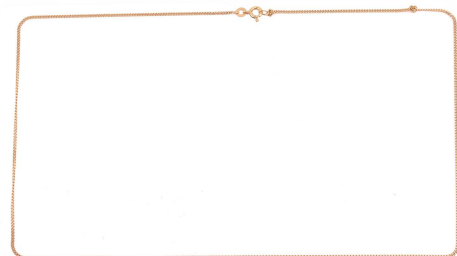
- 155 A Rococo-style enamel pendant on chain, pendant centred with a navette-shaped guilloche enamel plaque, painted with cabbage rosebud, to an embossed scrollwork mount leading to a fancy link surmount and later-added bail, unmarked yellow metal testing as 14ct, 4.0 cm drop, on a modern 9ct yellow gold curb link chain of 46.0 cm long, total weight of item 10.3 grams. **£250-350**



- 156 A Modernist-style diamond cluster ring in 18ct gold, set with nineteen round brilliant-cut diamonds, with an estimated total weight of 1.00ct, shoulders of abstract design, Birmingham 1986, ring head 1.2 cm wide, size P, 5.0 grams. **£300-500**



- 157 A flat curb link chain, fastens with a bolt ring clasp, in yellow metal marked '750', approximately 53cm long; 4.0 grams. **£150-250**



Fine Jewellery, Watches & Silver, 23rd Jan, 2025 09:30

- 158 A diamond bypass ring, set with four graduated old-cut diamonds in individual claw settings, with an estimated total weight of 1.20ct, between crossover shoulders to shank in yellow metal testing as 18ct, size N, 5.1 grams. **£700-900**



- 159 A Belle Époque-style diamond and seed pearl sautoir necklace, composed of a multi-row seed keshi pearl tassel drop, to a pyramidal suspension and swivel circular surmount, fully encrusted with brilliant-cut diamonds, on a cable link chain with diamond-set spacers, chain marked '18K', clasp marked '585', tassel pendant drop length 11.4 cm, overall 60.0 cm long, total weight 33.8 grams. **£1,500-2,000**



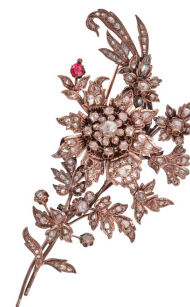
- 160 An early 20th century diamond bar brooch, set with a graduating row of 27 old-European cut diamonds, estimated total diamond carat weight 1.02ct, pave set with milgrain border, foliate engraving to sides, to a clasp with a fold over safety catch, white and yellow metal testing as silver over 10ct, brooch length 7.3cm, brooch width 0.5cm, 6.0 grams. **£400-600**



- 161 A diamond set closed bangle, estimated total diamond carat weight 2.78ct, pavé set in yellow metal testing as 18ct; Inner diameter 6.1cm; Total weight 17.7g **£1,500-2,000**



- 162 A late Ottoman floral spray brooch, composed of raised flowerhead clusters and foliate motifs, set throughout with rose-cut diamonds and diamond slices in foiled-back settings, highlighted with a faceted pink paste, fitted with tube hinged pin and trombone clasp, 10.5 x 5.4 cm, 34.7 grams. **£500-700**



Fine Jewellery, Watches & Silver, 23rd Jan, 2025 09:30

- 163 A diamond-set hinged bangle in 18ct white gold, constructed with two arched halves with heart-shaped pierced à jour to the interior, flush-set with twenty brilliant-cut diamond accents (one deficient), to a concealed tongue clasp with safety catch, London assay marks, internal diameter 5.8 cm, 14.9 grams. **£600-800**



- 164 A soudé emerald and diamond cluster ring, featuring a marquise-cut soudé emerald of 15.5 x 6.1 x 4.8 mm, claw-set within a frame of brilliant-cut diamonds, with an estimated total weight of 1.14ct, to a wire gallery and shank, yellow metal marked '14k', ring head measures 2.5 x 1.8 cm, the bottom of the shank has been taped and resized to size M, 10.0 grams. **£500-700**



- 165 An enamel filigree bracelet and matching ring; the bracelet is composed of openwork links with bright-cut and filigree details, alternating with green and red enamel accents, completed with a hook clasp, yellow metal marked 'NFJ 21C', adjustable length from 18.0 to 20.0 cm; together with a conforming ring to wire shank in yellow metal marked 'NFJ 21C', size L; Total weight of items 18.9 grams. (2) **£300-400**



- 166 A diamond cluster dress ring, the circular head is composed of seven old-cut diamonds, with an estimated total weight of 1.66ct, in a scrolled gallery and between shoulders with floral pattern engravings, unmarked white metal testing as 9ct, ring head measuring 1.2 cm across, size Q, 2.9 grams. **£400-600**



- 167 A Figaro link chain, comprising a series of round cable links and elongated flat links, completed with a later-added spring-ring clasp, yellow metal stamped '750', overall length 74.0 cm, 8.9 grams. **£300-500**



Fine Jewellery, Watches & Silver, 23rd Jan, 2025 09:30

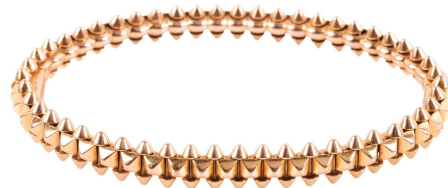
- 168 An oval locket of foliate design, with scrollwork engraving surrounding a central leaf design, opening to a painted portrait of a gentleman to the left compartment and a vacant compartment to the right, the locket attached to a bail with engraved borders and marked '18' and 'FB', locket and bail measure 4.3cm x 3.2cm, total weight approximately 14.2 grams. **£400-600**



- 169 Cartier - a pair of 'LOVE' earrings in 18ct gold, large model, each of hoop design with screw motifs, ear post and guardian fittings, signed and numbered, Swiss convention marks, 3.5 cm drop, total weight of items 13.6 grams. With box and papers. **£1,500-2,000**



- 170 Cartier - a Clash de Cartier hinged bangle, medium model, studded band ornated with articulated double-sided spikes, to a concealed tongue clasp and fold-over catch, signed and numbered, yellow metal struck with French eagle head assay marks (indicating 18ct), size 18, inner diameter 7.0 cm, 8.0 mm wide, 42.9 grams. No paper no box. **£2,000-3,000**



- 171 Cartier - a diamond-set Love ring in 18ct yellow gold, the polished flat band inset with six brilliant-cut diamonds, approximately 0.25ct total, signed, stamped 750, numbered 108894, 1997, Swiss assay mark and convention mark, ring size N, gross weight 9.05 grams. No box no papers. **£800-1,200**



- 172 Cartier - a pair of 'Perles de Diamants' stud earrings in 18ct white gold, each set with a round brilliant-cut diamond in a spherical closed-back mount, totalling 0.46ct of diamonds together as a pair, fitted with ear post and guardian backs, maker's mark for Sarl Hamard Vitau, and European convention marks, signed and numbered, cased in Cartier box, 6.9 grams.

No papers. **£800-1,200**



Fine Jewellery, Watches & Silver, 23rd Jan, 2025 09:30

- 173 Cartier - a 'LOVE' necklace in 18ct yellow gold, comprising two intertwined annulets with screw motifs, attached to a cable link chain with lobster clasp, signed and numbered, Swiss convention marks, 43.0 cm in length, 7.0 grams. With box and papers. RRP £2,430 **£1,500-2,000**



- 174 Cartier - a trinity ring in 18ct gold, designed as a trio of interlocking bands, in tri-colour gold stamped with Swiss convention marks, signed and numbered, size J, 6.0 grams. No paper no box. **£250-350**



- 175 Cartier - a pair of Trinity hoop earrings in 18ct gold, classic model, each comprising three intertwined bands in three colours, completed with ear post and omega clip fittings, signed and numbered, Swiss convention marks, 2.0 cm drop, total weight of items 9.7 grams. Boxed with papers. **£700-900**



- 176 A trilogy bangle, formed of three interlocking closed bangles in yellow and white metal testing as 14ct, inner diameter 6.3cm; Total weight 35.8g. **£600-800**



- 177 Cartier - a pair of 'LOVE' earrings in 18ct yellow gold, classic model, each of hoop design with screw motifs, ear post and integral hinged clip, signed and numbered, Swiss convention marks, 2.0 cm drop, total weight of items 11.9 grams. Boxed with paperwork. RRP £3,500 incl. VAT **£800-1,200**



Fine Jewellery, Watches & Silver, 23rd Jan, 2025 09:30

- 178 Cartier - a 'LOVE' bangle in 18ct yellow gold, composed of two rigid arcs with screw motifs, closure designed with two functional screws, opening by the supplied screwdriver, signed and stamped with Swiss convention marks, official size 18, inner diameter 5.9 cm, width 6.3 mm, total weight of item 34.2 grams.
Boxed and accompanied with paperwork dated 2007.
RRP £7,050 incl. VAT **£2,500-3,000**



- 179 Cartier - a trinity bangle in 18ct gold, formed of three interlocking bangles in yellow, rose and white gold, signed and numbered, with Swiss convention marks for 18ct gold, inner diameter 6cm; Total weight 30.4g.

No box, no papers. **£800-1,200**



- 180 Cartier - a pair of Trinity hoop earrings in 18ct gold, large model, each comprising three intertwined bands in tricolours, completed with ear post and guardian back, signed and numbered, Swiss convention marks, 3.3 cm drop, total weight of items 11.5 grams.
Boxed with papers. **£800-1,200**



- 181 Cartier - a 'LOVE' chain bracelet in 18ct yellow gold, comprising two intertwined annulets with screw motifs, attached to a cable link chain with lobster clasp, signed and numbered, Swiss convention marks, 18.5 cm in length, 3.3 grams.

Boxed and accompanied with paperwork dated 2008. **£800-1,200**



- 182 Cartier - a 'LOVE' bangle in 18ct white gold, composed of two rigid arcs with screw motifs, closure designed with two functional screws, opening by the supplied screwdriver, signed and stamped with Swiss convention marks, official size 18, inner diameter 6.0 cm, width 6.2 mm, total weight of item 34.8 grams.
Boxed and accompanied with paperwork dated 2016.
RRP £7,550 incl. VAT **£2,500-3,000**



Fine Jewellery, Watches & Silver, 23rd Jan, 2025 09:30

- 183 Cartier - a 'LOVE' chain bracelet in 18ct rose gold, comprising two intertwined annulets with screw motifs, attached to a cable link chain with lobster clasp, signed and numbered, Swiss convention marks, 19.7 cm in length, 4.0 grams. With box and papers. RRP £1,830 incl. VAT **£800-1,200**



- 184 Cartier - a trinity bangle in 18ct gold, formed of three interlocking bangles in yellow, rose and white gold, signed and numbered, with Swiss convention marks, each band measures 4.5 mm, inner diameter 6cm, total weight 58.6 grams. No box, no papers. **£3,500-4,000**



- 185 A Victorian aquamarine and diamond cluster ring, centred with an octagonal-cut aquamarine of 7.5 x 6.5 x 4.7 mm, encircled by twelve old-cut diamonds with an estimated total weight of 0.72ct, between C-scroll shoulders leading to a D-profile shank, unmarked pink metal testing as 9ct, ring head 1.4 x 1.25 cm, size P, 4.8 grams. **£400-600**



- 186 An old cut diamond single-stone pendant on chain with an estimated diamond carat weight 0.77ct, pendant size 8.1 x 8.5mm, on a 48cm yellow metal chain, both testing as 18ct; Total weight 3.1g. **£500-700**

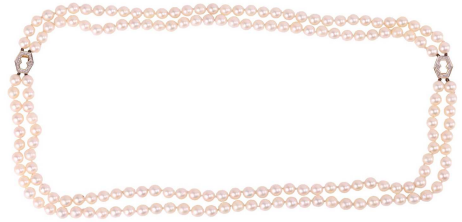


- 187 An amethyst and diamond dress ring, a step-cut claw-set amethyst of vivid purple colour, encircled by a border of pavé-set single-cut diamonds, to a split yellow metal shank with inversely set diamond shoulders, yellow metal testing as 10ct, ring head approximately 1.5 x 1.3cm, size N, 4.0g. **£200-300**



Fine Jewellery, Watches & Silver, 23rd Jan, 2025 09:30

- 188 A double-row cultured pearl necklace with diamond-set clasps; comprising two strands of round cultured pearls of 8.0 mm, hand-knotted to two hexagonal slide-on clasps, which could form two separated shorter bracelets, bi-coloured metal stamped '14K 585', overall length 78.0 cm, 128.0 grams. **£200-300**



- 189 A daisy head diamond cluster ring in 18ct white gold, centred with an old-cut diamond of 3.5mm, further encircled by eight single-cut diamonds, to a later-added tapered D-profile shank, London assay marks, ring head 10.6 mm wide, size L, 3.7 grams. **£200-300**



- 190 A heart locket pendant on chain set with demantoid garnet and diamond, the heart-shaped pendant centred with an old European cut diamond with an estimated weight of 0.16ct, surrounded with pavé-set circular-cut demantoid garnets, glazed compartment to the back, in yellow metal testing as 18ct, 2.7 cm drop; on a 42.0 cm long keshi pearl link chain in white metal testing as platinum; cased in a heart-shaped box, total weight of item 8.6 grams. **£500-600**



- 191 A pair of early 19th century miniature portrait brooches, the circular pins each set behind the glaze with an ivory miniature portrait, depicting the bust of a lady, haloed by alternating circular-cut sapphires and rose-cut diamonds, brooch fittings to the back and connected as inseparable with an 8.5 cm long cable link chain, each pin measures 1.6 cm wide, in an S.J. Phillips case, 4.9 grams. Ivory certification reference RMMKMSG9 **£400-600**



- 192 A gem-set bar brooch, the trefoil motif set to the centre of a knife-edged bar with foliate terminations, encrusted with circular-cut sapphires, single-cut and rose-cut diamonds, brooch fittings to verso, unmarked metal testing as silver on 9ct, 5.0 cm long, 4.8 grams. **£600-800**



Fine Jewellery, Watches & Silver, 23rd Jan, 2025 09:30

- 193 A ruby and diamond cluster ring, set with four round-cut rubies, interspersed with four old-mine and old-European cut diamonds, all set around a central old-European cut diamond, estimated total diamond carat weight 0.5ct, collet set in yellow metal with milgrain and pierced detail, testing as 18ct, ring head approximately 1.3 x 1.2cm, size N, boxed, 4.1g **£500-700**



- 194 A turquoise-set filigree bracelet, comprising seven roundels of filigree design, centred with a turquoise cluster and scalloped edge further set with round turquoise cabochons, completed with a hinge-styled catch with tension pin, unmarked yellow metal testing as 18ct, overall length 17.5 cm, 26.0 grams. **£800-1,200**



- 195 An old-cut diamond half hoop ring, with an estimated total weight of 1.71ct, comprising five graduated old-cut diamonds in claw settings with pierced scrollwork gallery, between tapered shoulders to D-profile shank, bi-coloured metal stamped '18ct PLAT', size P½, 3.4 grams. **£700-900**



- 196 A triple row bracelet with heart padlock clasp in 9ct rose gold, comprising three rows of graduated curb link chains, completed with a heart-shaped padlock clasp, Birmingham 1977, overall length 20.0 cm, 42.3 grams. **£600-800**



- 197 A diamond-set dress ring in 18ct bi-coloured gold, the wide textured band with sinuous borders, collet-set with a pear-cut diamond accent with an estimated weight of 0.18ct, Edinburgh 2008, width 11.8 mm, size Q, 13.2 grams. **£800-1,200**



Fine Jewellery, Watches & Silver, 23rd Jan, 2025 09:30

- 198 A cultured pearl necklace with a diamond-set clasp, comprising a single strand of graduated round pearls, sizing from 5.3 to 7.2 mm, to a trefoil cluster box clasp, set with three old-cut diamonds with an estimated total weight of 0.57ct, metal testing as silver on 9ct, overall length 46.0 cm, 26.7 grams. **£200-300**



- 199 A sapphire, ruby and diamond 'Day and Night' ring, one half channel set with square calibr -cut sapphires, the other with square calibr -cut rubies, two hinged half bands pav -set with single-cut diamonds, set in white metal testing as 18ct, size M, 7.6 grams. **£200-300**



- 200 A pair of diamond and pearl-set 'snowdrop' earrings, each petal set with graduated old-cut diamonds and featuring a fixed cultured pearl between, in an oxidised mount, to yellow metal screw-backs marked '9ct' and an attached safety ear wire; measuring 2.2 cm long, 3.3 grams. **£200-300**



- 201 A sapphire and diamond half hoop ring in 9ct gold, one central claw-set sapphire flanked by two smaller sapphires, interspersed with two diamonds, estimated total diamond carat weight 0.02ct, London hallmarked with makers mark 'G & TJ', size P, weight 2.9g **£200-300**



- 202 Three gem-set rings and one amethyst pendant; One rectangular-cut synthetic colour-change sapphire ring set in 9ct gold, stone size approximately 22 x 15.9 x 9.2mm, UK hallmarks, dated 1973, makers mark 'MK' size O 1/2; One amethyst and diamond entourage ring, amethyst size approximately 14.5 x 10.5 x 6.1mm, convention marks for 9ct gold, makers mark 'PJ', size T; Another similar amethyst and diamond ring with crossed shoulders, amethyst size approximately 14.5 x 10.5 x 7.2mm, convention marks for 9ct gold, makers mark 'PJ', size P; One amethyst pendant, amethyst size 24 x 17.8 x 14mm, claw set in yellow metal testing as 18ct; Total weight 35.7g (4). **£200-300**



Fine Jewellery, Watches & Silver, 23rd Jan, 2025 09:30

- 203 A gem-set dress ring, featuring a synthetic colour-change sapphire, measuring approximately 18mm x 14mm, in a twelve-claw setting, surrounded by round-cut colourless synthetic spinel, in a bi-colour metal mount, with a tapered wire gallery, tested as 18ct gold, size Q1/2; 12.2 grams **£200-300**



- 204 An Art Deco diamond bar brooch, of geometric design, claw and collet-set throughout with brilliant and single-cut diamonds, approximately 2.00ct total, mounted in unmarked white metal testing as 9ct, length 5.5cm, gross weight 6.23 grams. **£400-600**



- 205 A Victorian diamond and turquoise locket pendant, of oval form set with seven oval turquoise cabochons, the cabochons interspersed with grain set old-mine cut diamonds of graduating size, estimated total diamond carat weight 1.28ct, the locket opening to reveal a glazed compartment and open-backed settings to the cover of the locket, set in yellow metal testing as 18ct, locket size approximately 4.0 x 2.5cm including suspension loop, 18.5 grams. **£600-800**



- 206 An opal cluster ring, comprising an oval cabochon of a precious opal with vivid spectral play-of-colour, approximately measuring 9.2 x 7.1 x 4.3 mm, encircled with twelve smaller round opal cabochons, between tapered shoulders, to yellow metal testing as 9ct, ring head 1.6 x 1.5 cm, size K, 3.0 grams. **£200-300**



- 207 A pair of diamond-set floral earrings in 18ct yellow gold, each of swirl and textured design, centred with a brilliant-cut diamond in an illusion setting, peg and butterfly fittings, London 1978, 1.3 cm wide, 2.6 grams. **£200-300**



Fine Jewellery, Watches & Silver, 23rd Jan, 2025 09:30

- 208 A turquoise dress ring, comprising a pointed round turquoise cabochon of 11.6 x 11.6 x 8.6 mm, set to a surround in twisted rope design, between bifurcated shoulders, yellow metal marked '750', ring head 2.0 cm wide, size R, 10.2 grams. **£200-300**



- 209 A Victorian gem-set floral brooch, depicting a butterfly perching on a spray of flowers, the butterfly is embellished with rose-cut diamonds and circular-cut rubies, flowerheads centred with round seed pearls and petals further adorned with rose-cut diamonds, brooch fittings to the reverse, unmarked metal testing as silver gilt, overall measuring 6.8 x 3.5 cm, 14.2 grams. **£500-700**



- 210 A ruby and diamond ring, of toi et moi inspired design, estimated diamond carat weight 0.23ct, the ruby and diamond of cushion and old mine cut, claw set in white metal to a yellow metal shank, the two larger stones interspersed with a band of grain-set polki-cut diamonds and colourless sapphires, with milgrain border details, yellow and white metal testing as 18ct and platinum, size M ½, boxed, approximately 2.6 grams. **£400-600**



- 211 Of Royal Naval interest - a ruby and diamond-set Vice Admiral ensign brooch, pave-set throughout with single-cut diamonds, approximately 0.90ct total, the cross channel-set with calibre-cut rubies and a single ruby circular-cut highlight, mounted in white metal testing as 18ct, width 1.8cm, pin length 4.2cm, gross weight 4.90 grams. **£400-600**



- 212 A sapphire and diamond ring, a central line of seven collet-set round brilliant-cut diamonds, estimated total diamond carat weight 0.05ct, the diamond setting overlapping two single rows of eight round-cut sapphires, channel set in yellow metal testing as 18ct, size R, 5.5 grams. **£200-300**



Fine Jewellery, Watches & Silver, 23rd Jan, 2025 09:30

- 213 A heart-cut diamond pendant on chain, the heart-shaped diamond with an estimated weight of 0.84ct, in a collet with bail, 1.5 cm drop, on a box link chain of 39.5 cm, both unmarked and testing as 18ct, 6.8 grams. **£800-1,200**



- 214 Tiffany & Co. - an Elsa Peretti diamond-set teardrop pendant, pavé-set with round brilliant diamonds, of graduated sizes, with an estimated total carat weight of 0.75ct, in an 18ct yellow gold mount, 2.2 cm drop, to a trace chain with maker's marks and import marks for 18ct gold, measuring 48.0 cm long; 5.0 grams **£1,500-2,000**



- 215 A pair of late 19th century emerald, pearl and diamond bracelets; each composed of six openwork figure-of-eight links of foliate design, claw and collet-set with rose and old brilliant-cut diamonds, highlighted with two square-cut emeralds in foiled closed-back and collet setting and a single 4mm pearl, each link connected by a single similarly-set larger emerald, to a slide-in depress clasp with a safety catch, mounted in white and yellow metal, can be converted into a single necklace, lengths 19cm, gross weight 48.97 grams. (2) **£2,000-3,000**



- 216 A Mid-Victorian diamond and enamel demi-parure, comprising a necklace, a bracelet and a pair of earrings; all featuring an applied foliate motif embellished with rose-cut diamonds, superimposed on oval cobalt enamel plaques, collet-set within swirled tubular surrounds; the drop pendant attached to a snake chain with engraved box clasp, 41.5 cm long; bracelet with conforming chain and tongue clasp, 18.5 cm long; earrings fitted with dormeuse sprung wires, drop length 3.0 cm; all mounted in unmarked gilt metal, in fitted cases. By descent.



The parure belonged to Agnes Millonig (b.1819) and there is a portrait painted by Matevž Langus of her wearing the set, which will be offered as lot 5 in our Interiors, Art & Antiques sale (Thursday 30th January 9.30am)
 Agnes Millonig (née Dullar), was born in Vavta vas, Slovenia in 1819, one of seven children of Franz and Margaretha Dullar. Once married she may have settled in Ljubljana as it would appear that the ruins of Ljubljana Castle are visible in the background of the portrait. **£5,000-7,000**

Fine Jewellery, Watches & Silver, 23rd Jan, 2025 09:30

- 217 A Victorian diamond en tremblant flower brooch, the stem and leaves pave-set with old brilliant-cut diamonds, to a cluster and a single similarly-cut diamond in pinched collet setting, the open flowerhead mounted en tremblant of matching design, the five leaves pave-set with old brilliant-cut diamonds, highlighted by four similarly-cut diamonds in pinched collet setting, approximately 6.75ct total, mounted in white and yellow metal, unmarked, testing as gold and presumed silver, fitted box by Hennell Frazer & Haws, London, dimensions 4.2cm x 6.1cm, gross weight 21.90 grams. **£2,500-3,500**



- 218 A late 19th Century French Etruscan Revival necklace and earrings suite; the pendant of teardrop form crowned by turquoise accents, articulated element embellished with a frame of graduated pearls and twisted rope details, further decorated with a scalloped surround pierced with foliate design, suspending below with knife-edged bar fringe with turquoise cabochon drops, to a conforming bail, 8.2 cm drop, on a later cable link chain with pearl spacers, length could be adjusted from 42.0 cm to 57.0 cm; together with a pair of conforming earrings with shepherd's crook fittings, 6.0 cm long; All struck with French double eagle head assay marks for 18ct, chain marked '750'; Total weight of items 31.4 grams. (2) **£1,200-1,800**



- 219 A Victorian enamel and gem-set snake hinged bangle, decorated throughout with blue enamel, the head with graduated half pearls, the eyes highlighted with ruby circular cabochons, with rose and old brilliant-cut diamonds, approximately 0.20ct total, mounted in white and yellow metal, cased by W&E Mimprise, Goldsmiths & Jewellers, 32 Davies Street, Berkeley Square, inner diameter 5.3cm, gross weight 38.58 grams. **£1,500-2,000**



- 220 A late Victorian opal, pearl and enamel pendant on chain, featuring a large polished precious opal square plaque of 28.0 x 26.0 x 6.3 mm, displaying play-of-colour mainly ranging from green to purple on a light ground, set within a polychromatic enamelled surround with scrolled columns and a pair of cherubs, surmounted with a blister pearl and dangling a pearl drop below, in yellow metal testing as 18ct, 6.7 cm drop length; the enamel loop bail attached to a 48.5 cm long fancy link chain marked '15ct' with an associated spring ring clasp, cased in a "Dibdin & Co. Ltd 189 Sloane Street SW1" box, 52.2 grams. **£1,000-1,500**



- 221 A Victorian enamel, pearl and ruby snake hinged bangle, decorated throughout with blue enamel, the head with graduated half and seed pearls, the eyes highlighted with ruby circular cabochons, mounted in yellow metal, cased by A J Austen Watchmaker & Goldsmith, 35 Albert Gate, Knightsbridge, inner diameter 5.3cm, gross weight 26.04 grams. **£1,500-2,000**



Fine Jewellery, Watches & Silver, 23rd Jan, 2025 09:30

222 Marcus & Co. - a diamond and demantoid garnet wreath brooch, comprising six claw-set old-European cut diamonds, interspersed with six smaller collet-set old-European cut diamonds, estimated total diamond carat weight 4.10ct, the diamonds flanked by grain-set oval mixed-cut demantoid garnets in settings of laurel design, with bow tails to the south of the brooch each set with two mixed-cut demantoid garnets, the piece in yellow metal testing as 18ct, to a trombone clasp marked Marcus & Co, brooch fitting detachable, cased in Marcus & Co box, brooch measures approximately 3.2cm x 3.5cm, total weight approximately 10.9 grams. **£1,000-1,500**



223 A Victorian Etruscan Revival brooch set with turquoise cabochons, central turquoise cluster dome mounted within a concave surround, encircled with a border of round turquoise cabochons, and further embellished with twisted cable work and granulation details, suspending snake chain garlands and pendant drops set with turquoise accents, glazed compartment and fittings to the back, unmarked yellow metal testing as 18ct, overall measuring 4.5 x 8.8 cm, 23.8 grams. **£500-700**



224 A diamond cluster bar brooch, with an estimated total diamond weight of 2.82ct, the round cluster composed of eight old-cut diamonds interspersed with smaller rose-cut diamonds, to a polished bar and brooch fittings with trombone clasp to verso, unmarked metal testing as 18ct, cluster measures 16.3 mm wide, 6.2 cm long, 6.9 grams. **£1,500-2,000**



225 A pair of Ottoman diamond clip-on earrings, circa 1900s, of iris form, encrusted with rose-cut diamonds and diamond chips in a foiled-back mount, clip fittings to the reverse, unmarked pink metal testing as 14ct, 2.5 cm long, 14.0 grams. **£300-500**



226 A rubellite and diamond bar brooch, of cluster design, the central round-cut rubellite measuring approximately 7.8 x 7.8mm, encircled by 12 single cut diamonds, collet set in white metal with milgrain detail, testing as platinum, to a yellow metal bar of knife edge design, testing as 18ct, brooch secured with a C clasp, pin testing as 10ct, brooch length 3.9, brooch width 1.3, 4.7 grams. **£300-500**



Fine Jewellery, Watches & Silver, 23rd Jan, 2025 09:30

- 227 An amethyst and diamond cocktail ring in 18ct white gold, featuring a large domed chequerboard-cut amethyst 16.8 x 12.5 x 8.8 mm, collet-set within a diamond-set surround with millgrain edge, estimated total diamond weight 0.28ct, to a wide shank, London assay marks, ring head 2.3 x 1.8 cm, size M, 15.7 grams. **£700-900**



- 228 A diamond-set link bracelet, with an estimated total weight of 3.15ct, fully pavé-set with brilliant-cut diamonds to articulated double annulets between bar links, complete with a fold over clasp, white metal marked '14K 585', overall length 18.0 cm, 26.3 grams. **£800-1,200**



- 229 A diamond trilogy ring and a cluster ring; The three-stone diamond ring, estimated total diamond carat weight 0.21ct, illusion set in white metal to a yellow metal shank, both testing as 18ct, size N; The diamond set cluster ring with square ring head set with four round brilliant cut diamonds and one single cut diamond, totalling an estimated carat weight of 0.06ct, ring head in white metal with illusion design shoulders testing as platinum, to a yellow metal shank testing as 18ct, ring head 0.8 x 0.8cm, size N; Total weight 5.6g (2). **£350-550**



- 230 An arm bangle and matching ring in 9ct gold, both consisting of a D-section band bright-cut with bamboo leaf design, the inner diameter of the arm bangle measures 7.8 cm, ring is in size N, both struck with British assay marks; Total weight of items 22.6 grams. (2) **£300-500**



- 231 A diamond solitaire ring, of stylised floral design, featuring a round brilliant diamond, measuring approximately 4.5mm, with an estimated carat weight of 0.34ct, claw-set in a yellow metal mount with a raised gallery, hallmarked 14ct gold with London import marks, 1979; 4.6 grams **£200-300**



Fine Jewellery, Watches & Silver, 23rd Jan, 2025 09:30

- 232 Fabergé - an 'I Love You' crossover bracelet, set with three round brilliant cut diamonds with an estimated total diamond weight 0.12ct, the hollow open bracelet with egg shaped terminations, one star set with a round brilliant diamond, the other engraved with 'I Love You', a hidden ruby to the inside of the bracelet, signed and numbered, rose metal testing as testing as 18ct, internal diameter approximately 5.4cm, together with pouch, envelope, receipt and bag; Total weight 14.3g **£800-1,200**



- 233 A diamond solitaire ring in platinum, collet-set with a round transitional-cut diamond of 6.7 x 3.8 mm, with an estimated weight 1.09ct, to a wide comfort fit shank, Sheffield assay marks, size I, 13.3 grams. **£1,000-1,500**



- 234 A gem-set choker necklace, composed of an openwork pendant set with diamonds, paste and amethyst, with an additional suspended amethyst bead below, white metal marked '925', 7.5 cm drop; leading to four rows of faceted amethyst beads, and fastened with a white metal push bar clasp marked '14K', overall length 31.5 cm, total weight of item 62.1 grams. **£400-600**



- 235 A diamond-set ring and earring suite; the diamond cluster ring set with round brilliant diamonds, to ridged shoulders on a bi-metal mount marked '750', size O, together with a pair of matching diamond cluster earrings, in white metal marked '750'; 9.6 grams (2) **£300-500**



- 236 Mikimoto - a single-row cultured pearl necklace, round pearls of silver colour graduating from 3.9 mm to 7.0 mm, fastens with a fish hook clasp embellished with granulated details and a round pearl accent, stamped with the logo of Mikimoto and marked 'K14', overall length 44.5 cm, in the original pouch, 14.6 grams. **£300-500**



Fine Jewellery, Watches & Silver, 23rd Jan, 2025 09:30

- 237 A curb chain bracelet with a heart padlock clasp, comprising of a series of hollow links fastened with the heart-shaped clasp, clasp hallmarked 9ct gold, dated 1909, chain marked '9C', makers mark for John Grinsell & Sons, length of chain 19cm; Total weight 21.3g. **£300-500**



- 238 A diamond cluster ring, of floral design set with old-mine and old-European cut stones, estimated total diamond carat weight 1.87ct, set to a split yellow metal shank testing as 14ct, size O ½, boxed, 3.4g. **£500-700**



- 239 A 9ct gold cigar piercer by Sampson Mordan & Co., of tapered form with grooved barrel, spring mechanism, struck with London assay marks 1937, 5.4 cm long, 8.2 grams. **£150-200**



- 240 A French white metal and Vernis Martin spectacles or letter case, late 18th century. Of rounded rectangular form, gold ground painted with a garden scene featuring 3 figures, painted foliate and ribbon garland designs to sides and top section. Length 15.2cm. **£200-300**



- 241 An early 20th-century Russian white metal and cloisonné enamel spectacles case, of intricate floral design, oblong body ornated with polychromatic cloisonné enamel on a bright green ground, embellished with red paste cabochons, with push-in thumbpiece collet-set with an oval garnet cabochon, open to reveal a gilt interior, struck with zolotnik standard mark 84, overall measures 15.5 x 6.0 x 3.0 cm, total weight of item 7.79 ozt. **£300-500**



Fine Jewellery, Watches & Silver, 23rd Jan, 2025 09:30

- 242 A Cartier Trinity handbag in black leather with metal top handles and red suede lining; together with a Smythson Envelope shoulder bag in purple embossed leather with clasp lock and a matching purse. (2) **£300-500**



- 243 Louis Vuitton x Takashi Murakami - a Speedy 25 in monogram coated canvas with cherry print, S/S 2005, top zipper closure with tanned leather rolled top handles and trim, gold-tone hardware. Date code: SP0025 (February 2005 France). W25 x H21 x D14.5 cm.
The padlock and keys missing. No dust bag, no papers. **£1,000-1,500**



- 244 Louis Vuitton x Takashi Murakami - an umbrella in cherry print, S/S 2005, with monogram polyester, and a tanned leather-wrapped handle, gold-tone hardware. 85.0 cm in length. **£200-300**



- 245 Louis Vuitton - a Turenne MM handbag in monogram coated canvas, zipper closure opens to reveal a burgundy canvas lined interior, equipped with a pair of rolled top handles and a shoulder strap in tanned leather, gold-tone hardware. 2014. W26.5 x H23 x D14.5 cm.
No dust bag no box, with papers. **£300-500**



- 246 Louis Vuitton - a Jersey tote in Damier Ebene coated canvas and creme leather, top zipper closure opens to reveal a beige suede-lined interior with compartments, equipped with brown leather shoulder straps, and a detachable wide strap in creme-coloured leather, gold-toned hardware, studded base. W31 x H27 x D14 cm.
In dust bag together with paperwork. **£400-600**



Fine Jewellery, Watches & Silver, 23rd Jan, 2025 09:30

- 247 Louis Vuitton - a Cabas Rivington tote in Damier Ebene coated canvas, bucket shape with zipper gussets, lined with red canvas and equipped with two leather straps, gold-tone hardware. W28 x H28 x D15 cm. With dustbag and papers. **£200-300**



- 248 Cartier - a Santos de Cartier lighter, with screw motifs, of rounded rectangular form in bi-coloured finish partially plated with palladium, signed and numbered. Boxed with paperwork dated 2008. **£200-300**



- 249 Cartier - a diamond-set gas lighter of rounded rectangular form, cover and body in ridged design, highlighted with a line of pavé-set single-cut diamonds, signed and numbered, yellow metal stamped with Italian assay mark '750', and French weevil import marks, cased. No paperwork. **£600-800**



- 250 Cartier
Cartier
A 6601 Tortue desk clock
Serial: 1U00065
Year: 1980's
Case Material: Brass
Case diameter: 7.5cm x 8.8cm
Dial: White
Numerals: Roman
Movement: Quartz
Functions: None
Strap: None, adjustable desk stand
Buckle: None
Box: None
Paperwork: None
Gross weight: 357.61grs **£200-300**



Fine Jewellery, Watches & Silver, 23rd Jan, 2025 09:30

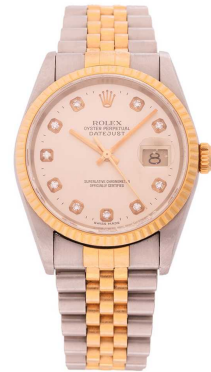
- 251 An S.T. Dupont James Bond Limited edition fountain pen, numbered 0595/3007, with a laser pointer function, boxed with instruction leaflets, 1989-2004 limited edition booklet and outer box. **£400-600**



- 252 Bucherer - a modernist cocktail watch set with diamond and sapphire, comprising a series of tapered abstract hinged links, set with eight brilliant-cut diamonds and eleven circular-cut sapphires, with a push-in button with sprung cover, open to reveal a round dial of 15 mm, with gilt hour batons and signed 'Bucherer', integral strap in yellow metal marked '750' and 'CB' for Carl Bucherer, 18.0 cm long, 48.1 grams. **£1,000-1,500**



- 253 **Rolex**
DateJust
Model: 16233
Serial: K776168
Year: 2001
Case Material: 18 Carat Gold / Stainless Steel
Case Diameter: 36mm
Dial: silvered
Numerals: Diamond
Movement: Cal 3135 Automatic
Functions: Date Aperture
Strap: 18 Carat Gold / Stainless Steel
Buckle: Stainless Steel Rolex
Box: Yes
Papers: Yes **£2,500-3,500**



- 254 Concord
 An 18ct gold 50-62-295 Wristwatch
 Serial: 937077
 Year: 2000-2009
 Case Material: 18ct Yellow Gold
 Case Diameter: 24mm
 Dial: Cream
 Numerals: Dot
 Movement: Quartz
 Box: No
 Papers: No
 Gross Weight: 51.45grs **£1,200-1,800**



Fine Jewellery, Watches & Silver, 23rd Jan, 2025 09:30

255 A Glycene 9ct Ladies Wristwatch

Year: 1970s

Case Material: 9ct Gold

Case Diameter: 23mm

Dial: Gilt

Numerals: Roman

Movement: Mechanical

Functions: N/A

Strap: Bark Textured 9ct

Buckle: 9ct Clasp

Box: No

Papers: No

Gross Weight: 29.6g **£300-500**



256 A Garrard 9ct Gentleman's Wristwatch

Serial: 57840

Year: 1970s

Case Material: 9ct Gold

Case Diameter: 36mm

Dial: Silvered

Numerals: Baton

Movement: Automatic

Functions: Date Aperture

Strap: Stainless Steel Gold Plated

Buckle: N/A

Box: Yes

Papers: Guarantee Present

Gross Weight: 57.9g **£200-300**



257 Cartier

A Stainless Steel Tank Solo Panther wristwatch

Serial: 711139PX

Year: 2009

Case diameter: 31mm

Dial: Brown and black

Numerals: None

Movement: Quartz

Functions: None

Strap: Leather

Buckle: Fold clasp

Box: None

Paperwork: None

Gross weight 32.05grs **£700-900**



Fine Jewellery, Watches & Silver, 23rd Jan, 2025 09:30

- 258 **Rolex**
Lady's Oyster Perpetual Datejust
Serial: 9212055
Model: 69173
Year: 1980s
Case Material: Stainless Steel Bi-metal, after-market diamond set bezel and lugs.
Case Diameter: 26mm
Dial: Custom Mother of pearl
Numerals: Diamond dot
Movement: Automatic
Functions: Date Aperture
Strap: Rolex Bi-metal
Buckle: Rolex Stainless Steel Deployant Clasp
Box: No **£3,000-5,000**



- 259 A Longines 9ct Gentleman's Wristwatch
Serial: 25.182.106
Year: 1980s
Case Material: 9ct Gold
Case Diameter: 32mm
Dial: White
Numerals: Roman
Movement: Quartz
Functions: Date Aperture
Strap: 9ct Gold Bracelet
Buckle: Sliding Clasp
Box: Yes
Papers: No **£500-700**



- 260 A Cartier Panthere 18 Carat Ladies Wristwatch
Model: 1070
Serial: CC132550
Year: 2014
Case Material: 18 Carat Yellow Gold
Case Diameter: 22mm
Dial: Silvered
Numerals: Roman
Movement: Quartz
Functions: N/A
Strap: Cartier Panthere 18 Carat Bracelet
Buckle: Butterfly Deployant
Box: No
Papers: Guarantee, Warranty and Service History in addition to extra links present **£3,000-5,000**



Fine Jewellery, Watches & Silver, 23rd Jan, 2025 09:30

- 261 A Cartier Balon Bleu Gentleman's Wristwatch
Model: 3785
Serial: 288822WX
Year: 2000s
Case Material: Stainless Steel Bimetal
Case Diameter: 42mm
Dial: Silvered Enamel
Numerals: Roman
Movement: Automatic
Functions: Date Aperture
Strap: Stainless Steel Bimetal
Buckle: Butterfly Deployant
Box: Yes
Papers: with the copy of the receipt **£4,000-5,000**



- 262 A Bulgari Ladies Wristwatch
Model: 88 23 2T
Serial: P. 129899
Year: 2000s
Case Material: Stainless Steel Bimetal
Case Diameter: 22mm
Dial: Black
Numerals: Dot and Arabic
Movement: Quartz
Functions: N/A
Strap: Stainless Steel Bimetal
Buckle: N/A
Box: No, Pouch Present
Papers: No **£600-800**

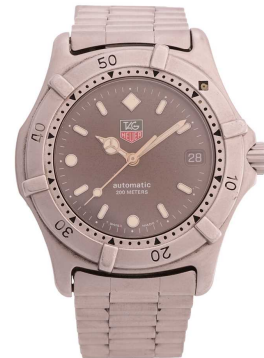


- 263 Franck Muller
Curvex Ladies Wristwatch
Serial: 1752 QZ
Model: No. 119
Year: 2010s
Case Material: Stainless Steel
Case Diameter: 25mm
Dial: Silvered Enamel
Numerals: Arabic
Movement: Automatic
Strap: Brown Leather
Buckle: Stainless Steel
Box: Service Case
Papers: Yes
Private Collection **£1,000-1,500**



Fine Jewellery, Watches & Silver, 23rd Jan, 2025 09:30

264 A TAG Heuer Professional 2000 Series Gentleman's Wristwatch
Model: 669.206F
Year: 1990s
Case Material: Stainless Steel
Case Diameter: 36mm
Dial: Black
Numerals: Baton
Movement: Automatic
Strap: Stainless Steel Bracelet
Buckle: Deployant Clasp
Box: No
Papers: No **£200-300**



265 Rolex Lady's Oyster Perpetual Datejust
Model: 6900
Serial: 6722671
Year: 1970s
Case Material: Stainless Steel Bi-metal
Case Diameter: 25mm
Dial: Gilt
Numerals: Baton
Movement: Cal 2030 Automatic
Functions: Date Aperture
Strap: Rolex Bi-metal
Buckle: Rolex Stainless Steel Deployant Clasp
Box: No
Papers: No
Private Collection



Together with Rolex Bucherer Lucerne spoon. **£1,000-1,500**

266 Rolex Lady's Oyster Perpetual Datejust
Serial: 3287204
Model: 6903
Case Material: 18 Carat Yellow Gold
Case Diameter: 25mm
Dial: Gray 'Ghost' Dial
Numerals: Baton
Movement: Automatic
Strap: Integrated Woven 18 Carat Yellow Gold
Buckle: 18 Carat Yellow Gold Rolex Oyster Deployant
Box: Service Case
Papers: No
Gross Weight:
Private Collection **£2,000-3,000**



Fine Jewellery, Watches & Silver, 23rd Jan, 2025 09:30

267 An Omega Automatic Gentleman's Wristwatch

Model: 1660190

Year: 1970s

Case Material: Stainless Steel

Case Diameter: 38mm

Dial: Black

Numerals: Baton

Movement: Automatic

Functions: Date Aperture

Strap: Stainless Steel Integrated

Buckle: Deployant

Box: Yes

Papers: No **£300-500**



268 **Omega Gentleman's Wristwatch**

Model: 135.041

Serial: 28118181

Year: 1960s

Case Material: Stainless Steel

Case Diameter: 33mm

Dial: Silvered

Numerals: Baton

Movement: Cal 601 Mechanical

Strap: Leather

Buckle: Clasp

Box: No

Papers: No

Private Collection **£200-300**



269 **Franck Muller Conquistador Gentleman's Chronograph Wristwatch**

Serial: 8005 CC

Model: No. 831

Year: 2010s

Case Material: Stainless Steel

Case Diameter: 35mm

Dial: Silvered Enamel

Numerals: Arabic

Movement: Automatic Cal 1185C02

Functions: Date Aperture, Chrono Subdials

Strap: Rubber

Buckle: Stainless Steel

Box: No

Papers: No

Private Collection **£3,000-5,000**



Fine Jewellery, Watches & Silver, 23rd Jan, 2025 09:30

270 **Rolex**
Lady's 18 Carat Wristwatch
Serial: 3328
Year: 1940s
Case Material: 18 Carat Gold
Case Diameter: 20mm
Dial: Silvered
Numerals: Arabic
Movement: Mechanical
Strap: Brown Leather
Buckle: Clasp
Box: No
Papers: No
Private Collection **£400-600**



271 A Cartier Balon Bleu Ladies Wristwatch, together with a cleaning kit.
Model: 3284
Serial: 505811WX
Year: 2000s
Case Material: Stainless Steel
Case Diameter: 36mm
Dial: Silvered Enamel
Numerals: Roman and Diamond inset Dot
Movement: Automatic
Functions: N/A
Strap: Stainless Steel Bimetal
Buckle: Butterfly Deployant
Box: Yes
Papers: with original receipt **£4,000-5,000**



272 An Art Deco ladies cocktail watch set with diamonds and synthetic sapphires, the rectangular case panel with pierced patterns and foliate engravings, set with single-cut diamonds and synthetic sapphire baton accents, dial and mechanical movement signed Buren Grand Prix, with a stylised mess bracelet, white metal marked garanti platine (platinum).
Case width: 14.3 mm
Gross weight: 17.3 g **£600-800**



Fine Jewellery, Watches & Silver, 23rd Jan, 2025 09:30

- 273 **Audemars Piguet**
An 18 Carat White Gold Gentleman's Wristwatch
Serial: 86321
Year: 1950's
Case Material: 18 White Gold
Case Diameter: 36mm
Dial: Black
Numerals: Baton
Movement: Automatic Cal 21 C
Functions: Date Aperture
Strap: Woven 18 Carat White Gold
Buckle: 18 Carat White Gold AP Clasp
Box: No
Papers: No
Gross Weight: 103.3 grams
Private Collection **£3,000-5,000**



- 274 **A Hublot Big Bang Titanium and Diamond Set Gentleman's Chronograph Wristwatch**
Serial: 1107190
Year: 2000s
Case Material: Stainless Steel and Titanium
Case Diameter: 43mm
Dial: Black
Numerals: Baton and Arabic
Movement: Automatic 06714
Functions: Chronograph with Three Subdials, Date Aperture
Strap: Hublot Rubber Strap
Buckle: Hublot Stainless Steel Deployant Strap
Box: No
Papers: No **£3,000-4,000**



- 275 **Rolex**
Ladies Oyster Perpetual Datejust
Serial: 6485219
Model: 6917
Year: 1970s
Case Material: Stainless Steel Bi-Metal
Case Diameter: 25mm
Dial: Gilt
Numerals: Baton
Movement: Automatic Cal 2030
Strap: Jubilee Bi-Metal
Buckle: Stainless Steel Rolex Deployant Clasp
Box: Yes
Papers: No
Private Collection **£1,200-1,800**



Fine Jewellery, Watches & Silver, 23rd Jan, 2025 09:30

276 A TAG Heuer Aquaracer Gentleman's Wristwatch

Model: WBW7517

Serial: WAY2112-0

Year: 2010

Case Material: Stainless Steel

Case Diameter: 40mm

Dial: Blue

Numerals: Baton

Movement: Cal 5 Automatic

Strap: Stainless Steel Bracelet

Buckle: Deployant Clasp

Box: No

Papers: No £500-700



277 Breitling

A Stainless Steel Chronomat Gentleman's Wristwatch,
ref:AB0134

Serial: 3305563

Year: 2020

Case Material: Stainless Steel

Case Diameter: 42mm

Numerals: Baton

Movement: Automatic

Functions: Date aperture, three sub-dials

Strap: Stainless Steel reeded

Buckle: Fold-Over

Box: Yes

Paperwork: None £1,500-2,500



278 A Baume & Mercier Riviera Gentleman's Wristwatch

Model: 665563

Serial: 5031542

Year: 2000s

Case Material: Stainless Steel

Case Diameter: 40mm

Dial: Silvered

Numerals: Roman

Movement: Automatic

Strap: Stainless Steel

Buckle: Butterfly Deployant

Box: No

Papers: No £400-600



279 A Bueche-Girod 9ct Ladies Wristwatch

Year: 1970s

Case Material: 9ct Gold

Case Diameter: 25mm

Dial: Malachite

Numerals: N/A

Movement: Mechanical

Functions: N/A

Strap: Bark Texture 9ct Gold

Buckle: 9ct Clasp

Box: Unassociated Box

Papers: No £600-800



Fine Jewellery, Watches & Silver, 23rd Jan, 2025 09:30

- 280 Bucherer - an enamel cocktail watch, featuring a manual wind movement, a silver-tone dial with gold-tone baton hour markers under a shaped crystal, the 10.5 mm wide case and sprung bracelets embellished with polychromatic roses on a teal guilloche enamel ground, yellow metal struck with Swiss Helvetia head marks for 18ct, signed on dial, total weight of item 16.3 grams. **£400-600**



- 281 A full hunter Waltham pocket watch, with engraved case of engine-turned and foliate design, with a keyless wound movement, signed W.W.Co, in a yellow metal case marked '14K', case measuring 4.6cm, opening to reveal a glazed 3.7cm white enamel numerical dial, blue steel poire hands, a seconds sub-dial at six o'clock; Gross weight 63.9 grams. **£600-800**



- 282 Rolex - A Precision stainless steel pocket watch, Model number: 4609, Serial number 571020, with white dial and baton markers, featuring a subsidiary seconds dial at six o'clock, stainless steel hands, top winding movement, circa 1948-1950, with green Rolex fitted case, weight approximately 45.8 grams. **£800-1,200**



- 283 A half-hunter pocket watch with engraved case of foliate design, featuring a keyless wound movement, opening to reveal a 3.4cm white circular dial with Roman numerals, blue steel poire hands, a seconds sub-dial at three o'clock, yellow metal testing as 14ct over base metal; Gross weight 60.2 grams. **£400-600**



- 284 An open-face enamelled fob watch and a watch ring; The Guilloche blue enamelled fob watch, with a white enamel dial with Roman numerals, in a white metal case testing as silver measuring approximately 2.8 x 2.8cm, movement not currently functioning; The square watch ring featuring a hinged labradorite top with floral motif and a hidden dial, set in rolled gold, ring head measures approximately 1.4 x 1.8 x 1.2cm, makers mark Kollmar & Jourdan; Total weight 25.4g (2). **£200-300**



Fine Jewellery, Watches & Silver, 23rd Jan, 2025 09:30

- 285 A half hunter pocket watch, to an Albert chain, with additional 9ct gold retractable pencil; The half-hunter pocket watch cover, featuring a keyless wound movement and blue enamel Roman numerals, opening to a 3.5cm glazed white enamel dial with Roman numerals, the reverse featuring a crest engraving, reading 'nil sistere contra', testing as 14ct, inner case marked 'AB' and testing as 14ct, total weight of pocket watch approximately 59.2 grams; The Albert chain approximately 40cm long, clasps on each end stamped '18c', total weight of chain approximately 11.1 grams; The 9ct gold retractable pencil engraved with 'R.S. - EAGC, 16th April 1929', hallmarked 9ct gold, London, dated 1928, makers mark for Sampson Mordan & Co, total weight of pencil approximately 20.4 grams; Total weight of items approximately 90.7 grams (3). **£800-1,200**



- 286 An open-faced pocket watch, marked '14K', having foliate and scrolling engraved detailing to the exterior, the dial having Roman numerals, with a wound movement, case width 33mm, together with a ladies manual wind wristwatch, with a yellow metal case marked '14K', to a black leather strap; 46.7 grams (2) **£200-300**



- 287 An open-face pocket watch, comprising of a glazed yellow metal dial of floral design, measuring 3.7cm, with Roman numerals, the reverse featuring engraving of foliate and engine turned design surrounding a central crest, featuring a key-wound movement in a 4.1cm yellow metal case marked internally as '18K' and stamped 'JS', total weight approximately 46.5 grams. **£300-500**



- 288 A Lady's pocket watch and chain
 Serial: 2273
 Case Material: Yellow Metal
 Case Diameter: 40mm
 Dial: White
 Numerals: Roman
 Movement: Key Winding
 Fancy-link chain with Albert swivel clasp and springring, stamped 15ct
 Box: No
 Papers: No
 Gross Weight: 51.90grs **£300-500**



Fine Jewellery, Watches & Silver, 23rd Jan, 2025 09:30

- 289 An 18ct gold J.W Benson open-face pocket watch, to an 18ct Albert chain, with additional 9ct retractable pencil; The open-face pocket watch comprising of a glazed 4.4cm white enamel dial, with Roman numerals and blue steel poire hands, a second sub-dial at six o'clock, inner case hallmarked for 18ct gold, London, 1912, makers mark for J W Benson; The Albert chain hallmarked 18ct gold, approximately 35cm long; The retractable pencil and case engraved with initials 'R.S', hallmarked 9ct gold, London, case dated 1937, makers mark for Sampson Mordan & Co; Gross weight 152.3 grams (3).

£1,200-1,800



- 290 A lady's diamond-set pocket watch, the 23mm golden circular dial with Roman numerals and poire hands, to a rose-cut diamond bezel, the reverse pave-set throughout with similarly-cut diamonds, to a similarly-set tapered suspensory loop, length 4.1cm, gross weight 16.74 grams.

£500-700



- 291 A Charles I Seal Top Spoon, fig-shaped bowl with V joint to reverse of bowl. The parcel gilt seal top with prick engraved initials, I.M. London 1641 by William Cary. 17.2cm length, 42.8 grams

This collection of 19 early seal top and apostle spoons have been consigned from the estate of the late Geraldine Kennedy-Wallace Geraldine and her husband Stephen Wallace. Both highly respected and decorated Canadian chemists, they moved to the UK to pursue their academic careers. Stephen was a polymath, also having a degree in music and a diverse range of interests including being a member of the British Silver Society.

This collection has been carefully curated. The spoons are all in excellent condition and represent the work of some of the best known spoon makers of the time. **£800-1,200**



- 292 A James I Seal Top Spoon; fig shaped bowl with V joint to reverse of bowl. Seal top with prick engraved initials R.T.F. Londo 1616 by William Limpenny. 16cm, 37.1 grams

This collection of 19 early seal top and apostle spoons have been consigned from the estate of the late Geraldine Kennedy-Wallace Geraldine and her husband Stephen Wallace. Both highly respected and decorated Canadian chemists, they moved to the UK to pursue their academic careers. Stephen was a polymath, also having a degree in music and a diverse range of interests including being a member of the British Silver Society.

This collection has been carefully curated. The spoons are all in excellent condition and represent the work of some of the best known spoon makers of the time. **£1,200-1,800**



Fine Jewellery, Watches & Silver, 23rd Jan, 2025 09:30

- 293 A James I Apostle Spoon, depicting St Simon Zelotes with a saw. Traces of gilding to the bowl. London 1610 by Daniel Cary. 18.2 cm length, 58.5 grams
This collection of 19 early seal top and apostle spoons have been consigned from the estate of the late Geraldine Kennedy-Wallace Geraldine and her husband Stephen Wallace. Both highly respected and decorated Canadian chemists, they moved to the UK to pursue their academic careers. Stephen was a polymath, also having a degree in music and a diverse range of interests including being a member of the British Silver Society.



This collection has been carefully curated. The spoons are all in excellent condition and represent the work of some of the best known spoon makers of the time. **£2,000-3,000**

- 294 An Elizabethan Seal Top Spoon; fig shaped bowl with V joint to reverse of bowl. The parcel gilt seal top with prick engraved initials F.E. London 1558 by Nicholas Batholomew. 15.7 cm length, 39.6 grams
This collection of 19 early seal top and apostle spoons have been consigned from the estate of the late Geraldine Kennedy-Wallace Geraldine and her husband Stephen Wallace. Both highly respected and decorated Canadian chemists, they moved to the UK to pursue their academic careers. Stephen was a polymath, also having a degree in music and a diverse range of interests including being a member of the British Silver Society.



This collection has been carefully curated. The spoons are all in excellent condition and represent the work of some of the best known spoon makers of the time. **£1,200-1,800**

- 295 A Charles I Provincial Seal Top Spoon; fig-shaped bowl, with V-joint to reverse of bowl. Parcel gilt seal top, with prick engraved initials W.I. T.L and prick engraved date of 1658. Provincial, probably West Country, possibly Thomas Dare circa 1658. 15.4 cm length, 39.1 grams
This collection of 19 early seal top and apostle spoons have been consigned from the estate of the late Geraldine Kennedy-Wallace Geraldine and her husband Stephen Wallace. Both highly respected and decorated Canadian chemists, they moved to the UK to pursue their academic careers. Stephen was a polymath, also having a degree in music and a diverse range of interests including being a member of the British Silver Society.



This collection has been carefully curated. The spoons are all in excellent condition and represent the work of some of the best known spoon makers of the time. **£500-700**

Fine Jewellery, Watches & Silver, 23rd Jan, 2025 09:30

- 296 An Elizabethan Apostle Spoon, depicting a parcel gilt figure of St Peter carrying keys. Scratch initials to the reverse of the bowl, B.R.S. London 1588, bearing the maker's mark of a mullet, probably for Patrick Brew. 17.7 cm length, 60 grams
This collection of 19 early seal top and apostle spoons have been consigned from the estate of the late Geraldine Kennedy-Wallace Geraldine and her husband Stephen Wallace. Both highly respected and decorated Canadian chemists, they moved to the UK to pursue their academic careers. Stephen was a polymath, also having a degree in music and a diverse range of interests including being a member of the British Silver Society.



This collection has been carefully curated. The spoons are all in excellent condition and represent the work of some of the best known spoon makers of the time. **£2,000-3,000**

- 297 A Charles II Apostle Spoon, depicting a parcel gilt figure of St Batholomew with flaying knife; prick engraved initials to reverse of bowl B.L.I. London 1637 by Richard Crosse. 19.cm length, 61.8 grams
This collection of 19 early seal top and apostle spoons have been consigned from the estate of the late Geraldine Kennedy-Wallace Geraldine and her husband Stephen Wallace. Both highly respected and decorated Canadian chemists, they moved to the UK to pursue their academic careers. Stephen was a polymath, also having a degree in music and a diverse range of interests including being a member of the British Silver Society.



This collection has been carefully curated. The spoons are all in excellent condition and represent the work of some of the best known spoon makers of the time. **£2,000-3,000**

- 298 A James I Apostle Spoon, depicting St Matthias with an axe, London 1606 by William Cawdell. 17.9 cm length, 44.7 grams
This collection of 19 early seal top and apostle spoons have been consigned from the estate of the late Geraldine Kennedy-Wallace Geraldine and her husband Stephen Wallace. Both highly respected and decorated Canadian chemists, they moved to the UK to pursue their academic careers. Stephen was a polymath, also having a degree in music and a diverse range of interests including being a member of the British Silver Society.



This collection has been carefully curated. The spoons are all in excellent condition and represent the work of some of the best known spoon makers of the time. **£3,000-5,000**

Fine Jewellery, Watches & Silver, 23rd Jan, 2025 09:30

- 299 An Elizabethan Seal Top Spoon; the fig shaped bowl with V joint to the reverse and with scratch initials S.L. to the reverse of the bowl. London 1587, maker's mark possibly by William Cocke. 15.4cm length, 39.1 grams
This collection of 19 early seal top and apostle spoons have been consigned from the estate of the late Geraldine Kennedy-Wallace Geraldine and her husband Stephen Wallace. Both highly respected and decorated Canadian chemists, they moved to the UK to pursue their academic careers. Stephen was a polymath, also having a degree in music and a diverse range of interests including being a member of the British Silver Society.



This collection has been carefully curated. The spoons are all in excellent condition and represent the work of some of the best known spoon makers of the time. **£1,200-1,800**

- 300 A Mary Tudor Seal Top Spoon, fig shaped bowl with V joint to reverse of bowl, parcel gilt seal top with a latter scratched initial T. London 1555, maker's mark of a crescent within a moon for Nicholas Bartholomew. 159cm length, 36.9 grams.
This collection of 19 early seal top and apostle spoons have been consigned from the estate of the late Geraldine Kennedy-Wallace Geraldine and her husband Stephen Wallace. Both highly respected and decorated Canadian chemists, they moved to the UK to pursue their academic careers. Stephen was a polymath, also having a degree in music and a diverse range of interests including being a member of the British Silver Society.



This collection has been carefully curated. The spoons are all in excellent condition and represent the work of some of the best known spoon makers of the time. **£1,200-1,800**

- 301 A Charles II Seal Top Spoon, the fig shaped bowl with V joint to the reverse of bowl. The parcel gilt seal with prick engraved initials R.S.R.P. London 1630 by Daniel Cary. Approximately 52.5 grams (1.68ozt).
This collection of 19 early seal top and apostle spoons have been consigned from the estate of the late Geraldine Kennedy-Wallace Geraldine and her husband Stephen Wallace. Both highly respected and decorated Canadian chemists, they moved to the UK to pursue their academic careers. Stephen was a polymath, also having a degree in music and a diverse range of interests including being a member of the British Silver Society.



This collection has been carefully curated. The spoons are all in excellent condition and represent the work of some of the best known spoon makers of the time. **£800-1,200**

Fine Jewellery, Watches & Silver, 23rd Jan, 2025 09:30

- 302 A Charles I Seal Top Spoon; fig-shaped bowl; with V joint to reverse of bowl. Parcel gilt seal top with prick engraved initials, and prick engraved date, possibly 1640. Single struck mark to bowl. Probably West Country. 18cm length, 58.3 grams
This collection of 19 early seal top and apostle spoons have been consigned from the estate of the late Geraldine Kennedy-Wallace Geraldine and her husband Stephen Wallace. Both highly respected and decorated Canadian chemists, they moved to the UK to pursue their academic careers. Stephen was a polymath, also having a degree in music and a diverse range of interests including being a member of the British Silver Society.



This collection has been carefully curated. The spoons are all in excellent condition and represent the work of some of the best known spoon makers of the time. **£700-1,000**

- 303 A Charles I Seal Top Spoon. Fig shaped bowl with V joint to reverse of bowl. Parcel gilt seal top with prick engraved initials T.G & I and prick engraved date of 1625. Provincial, probably West Country. Single mark struck to bowl. 49.1 grams, 17.8 cm length.
This collection of 19 early seal top and apostle spoons have been consigned from the estate of the late Geraldine Kennedy-Wallace Geraldine and her husband Stephen Wallace. Both highly respected and decorated Canadian chemists, they moved to the UK to pursue their academic careers. Stephen was a polymath, also having a degree in music and a diverse range of interests including being a member of the British Silver Society.



This collection has been carefully curated. The spoons are all in excellent condition and represent the work of some of the best known spoon makers of the time. **£600-800**

- 304 A Charles II Seal Top Spoon; the fig-shaped bowl with V joint to reverse, prick engraved initials 'WTM' to seal top. London 1647 by Jeremy Johnson. 45.9 grams 17.1 cm length.
This collection of 19 early seal top and apostle spoons have been consigned from the estate of the late Geraldine Kennedy-Wallace Geraldine and her husband Stephen Wallace. Both highly respected and decorated Canadian chemists, they moved to the UK to pursue their academic careers. Stephen was a polymath, also having a degree in music and a diverse range of interests including being a member of the British Silver Society.



This collection has been carefully curated. The spoons are all in excellent condition and represent the work of some of the best known spoon makers of the time. **£700-1,000**

Fine Jewellery, Watches & Silver, 23rd Jan, 2025 09:30

- 305 An Elizabethan Spoon; with parcel gilt lion sejant terminal. The gilt finial cast as a lion sejant resting on a stepped plinth; the fig-shaped bowl prick engraved to reverse with initials 'IK'. London 1588 by William Cawdell. 17.3 cm length, 38.5 grams
This collection of 19 early seal top and apostle spoons have been consigned from the estate of the late Geraldine Kennedy-Wallace Geraldine and her husband Stephen Wallace. Both highly respected and decorated Canadian chemists, they moved to the UK to pursue their academic careers. Stephen was a polymath, also having a degree in music and a diverse range of interests including being a member of the British Silver Society.



This collection has been carefully curated. The spoons are all in excellent condition and represent the work of some of the best known spoon makers of the time. **£5,000-7,000**

- 306 A James I Apostle Spoon, depicting St Bartholomew with a flaying knife in parcel gilt; prick engraved initials to the reverse of the bowl R.H. over E.C. London 1625, probably by William Lovejoy, maker's mark of a star within a crescent moon. 18.6 cm length, 62.4 grams.
This collection of 19 early seal top and apostle spoons have been consigned from the estate of the late Geraldine Kennedy-Wallace Geraldine and her husband Stephen Wallace. Both highly respected and decorated Canadian chemists, they moved to the UK to pursue their academic careers. Stephen was a polymath, also having a degree in music and a diverse range of interests including being a member of the British Silver Society.



This collection has been carefully curated. The spoons are all in excellent condition and represent the work of some of the best known spoon makers of the time. **£2,000-3,000**

- 307 A pair of Elizabethan Apostle Spoons, depicting parcel gilt figures of St Andrew with a transverse saltire cross and St Paul with a cross. London 1580 by Richard Pinder. V joints to the reverse of the bowls and visible V joints at the top of the stems. 18.6 and 18.3 cm length, 133 grams
This collection of 19 early seal top and apostle spoons have been consigned from the estate of the late Geraldine Kennedy-Wallace Geraldine and her husband Stephen Wallace. Both highly respected and decorated Canadian chemists, they moved to the UK to pursue their academic careers. Stephen was a polymath, also having a degree in music and a diverse range of interests including being a member of the British Silver Society.



This collection has been carefully curated. The spoons are all in excellent condition and represent the work of some of the best known spoon makers of the time. **£6,000-8,000**

Fine Jewellery, Watches & Silver, 23rd Jan, 2025 09:30

- 308 A James I Apostle Spoon; with a well cast, parcel gilt depiction of St James the Greater with a pilgrim staff. Later prick engraved initials to the reverse of the bowl, T.S over F.C 1649, with additional prick engraved decoration. London 1624 by Daniel Cary. 18.1 cm length, 62 grams.

This collection of 19 early seal top and apostle spoons have been consigned from the estate of the late Geraldine Kennedy-Wallace Geraldine and her husband Stephen Wallace. Both highly respected and decorated Canadian chemists, they moved to the UK to pursue their academic careers. Stephen was a polymath, also having a degree in music and a diverse range of interests including being a member of the British Silver Society.



This collection has been carefully curated. The spoons are all in excellent condition and represent the work of some of the best known spoon makers of the time. **£2,000-3,000**

- 309 A George III Silver Tea Urn. London 1810 by John Edwards. The semi-spherical body fluted to the lower part, with reeded spigot and hinged foliate scroll and anthemion tap; square base with four lion's paw feet. Reeded squared handles with foliate terminals and domed pull-off cover with cast vase-shaped final; tongue and dart borders throughout. The cover is engraved with the crest of the Marquess of Bute below a Marquess's coronet. The arms are those of Stuart for John, 1st Marquess of Bute (1744-1814). Marked to base, cover and spigot.

37.5cm high. Approximately 4105.66 grams (132ozt).

Last sold:- Christie's sale of Works of Art from the Bute Collection. 3rd July 1996 **£4,000-6,000**



- 310 A silver canteen by Poston Products Ltd comprising twelve teaspoons, twelve dessert spoons, twelve soup spoons, four serving spoons, two sauce ladles, twelve table forks and twelve dessert forks, composite dates, approximately 3915.9 grams (125.9ozt) **£1,500-2,000**



- 311 A silver ten pin bowling trophy, in the form of a bowling pin inscribed "Lyons Maid", Annual Championship" "Silver Ten Pin Trophy", hallmarked Birmingham 1964, on an ebonised plinth, inscribed with the winners 1967 to 1969, 49cm high. **£1,500-2,000**



Fine Jewellery, Watches & Silver, 23rd Jan, 2025 09:30

- 312 A five-piece silver tea and coffee set, of canted rectangular form with simulated wooden knobs and handles, comprising a coffee pot, a teapot, a two-handled sugar bowl, and a milk jug each with a monogram with M.K, by J B Chatterley & Sons, Birmingham 1961/1962, approximately 2593 grams (83.3ozt) gross, together with a silver salver by the same maker on four scroll feet, also monogrammed, 35cm diameter, Birmingham 1962, approximately 1207 grams (38.81ozt) **£1,000-1,500**



- 313 A silver ice pail/wine cooler by Theo Fennell, London 1994, of tapering circular pail form, with a row of decorative studs and a swing handle, on ring foot, detachable white metal grille, height including handle 37.0 cm, total weighable excluding the grille approximately 1678.34 grams (53.96 ozt). **£2,500-3,000**



- 314 A George III/Victorian harlequin silver-mounted table cruet set on stand, assorted hallmarks, 1797, 1808 and 1883; of oval form, with stippled foliate decoration, and engraved with a lion coward family crest on one side, loop handle with urn finial, supported on bracket paw feet, containing five fluted glass bottles with silver mounts, maker's mark rubbed off, one reading Henry Chawner & John Emes; 24.0 cm tall, 20.0 cm wide. **£300-500**



- 315 A Victorian silver and cut-glass cruet set on stand, stand hallmarks rubbed, hallmarks to gilt spoon, London, 1876, makers mark for Samuel Whitford, the cruet set of circular form, with pierced and gadrooned detail, engraved with a griffin crest, with a gadrooned scroll handle, supported on paw feet, containing six cut glass bottles with mounts, one with aforementioned gilt spoon, set approximately 19cm tall x 11cm wide. **£200-300**



- 316 A Dutch matched four-piece tea service; the coffee pot of squash form with morning glory cast finial, leaf-capped C-scroll handle, supported on bracket feet, Dutch silver marks and maker's mark 'GB', 23.0 cm tall; a squat teapot and cream jug of wyvern flute design, with wooden scroll handles and floral finial, on bracket feet, both struck with Dutch silver marks and maker's mark 'IGG'; and lastly a German sugar basket with swing handle of similar design, Augsburg 1739, and Dutch import marks; Total weight of items approximately 1648.48 grams (53.00 ozt). (4) **£700-1,000**



Fine Jewellery, Watches & Silver, 23rd Jan, 2025 09:30

- 317 A late 19th century possibly German silver (800) cashew box, the cartouch-shaped hinged top with pierced Neo-Classical decoration backed with faux marble panel and fire gilt interior, the base with further tracery decoration, Total weight approximately 83.97 grams (2.7 ozt), 8 cm x 5 cm x 1 cm deep. **£150-200**



- 318 An Indo-Portuguese filigree white metal rectangular betel box (?) unmarked but probably late 19th century, Approximately 214.61 grams (6.9 ozt), 13 cm x 9 cm x 3.5 cm **£150-200**



- 319 An Italian cased carving set by Giannitrapani, comprising three various sizes of four-pronged carving forks, and two carving knives, the two larger forks and the knives all have stainless steel blades and prongs to white metal handles struck '800', the smaller fork is integrally in white metal stamped '925', all signed and struck with Italian assay marks, as well as registration marks '413Roma'. **£200-300**



- 320 A large quantity of silver flatware including a set of eight Old English and tread pattern table spoons and seven dessert spoons, London 1807, and three salt spoons, London 1808 in the same pattern, a pair of Victorian fiddle and thread table forks and six Victorian fiddle and thread pattern dessert forks, a harlequin set of eleven fiddle pattern table forks, two pairs of fiddle pattern serving spoons, together with a mixed collection spoons, forks, a sugar sifter spoon and a butter knife, approximately 3763 grams (121ozt) gross. **£800-1,200**



- 321 A George III silver loving cup, London 1788, maker's mark 'W.S', of bell shaped form to a circular spreading foot, with reeded handles, chased with a basket of flowers and a scrolled empty cartouche on the other side, 14.0 cm high, approximately 149.60 grams (4.81 ozt). **£150-200**



Fine Jewellery, Watches & Silver, 23rd Jan, 2025 09:30

- 322 An Italian white metal table cigar case, by Fratelli Cacchione of Milan, circa 1944-1970, of rectangular form with sunburst design, with tapered thumbpiece, struck with Italian assay marks and maker's initials, 19.3 x 14.5 x 3.3 cm, total weight of item approximately 855.03 grams (27.49 oz). **£500-700**



- 323 Two silver snuff boxes; comprising a Victorian silver snuff box, rectangular with cast foliate borders, ribbed sides and partially engine-turned to cover and base; Gilt interior. London 1841 by Edward Edwards. 9 x 5.7 cm; together with a 20th-century silver snuff box, rectangular engine turned with cast foliate borders. Monogram engraved to gilt interior. Birmingham 1968 by Padgett & Braham Ltd. 8 x 5cm. Approximately 276.82 grams (8.9 oz). (2) **£150-200**



- 324 An Arts and Crafts silver casket, by Albert Edward Jones, Birmingham 1906, the rectangular form body framing panels embossed with various animal woodland scenes, corner embellished with berry vines, the hinged pyramid cover also embossed with floral and amphibian motifs, opening to reveal a fabric lined interior, L10.0 x W6.7 x H8.0 cm, total weight of item approximately 217.41 grams (6.99 oz). **£150-200**



- 325 A pair of five light candelabra branches; with reeded branches supporting tapering square shaped sconces with integral nozzles; London 1901 by William Comyns. 8cm high x 33cm width. approximately 964.20 grams (31ozt). **£200-300**



- 326 A pair of silver Corinthian column candlesticks, the sconces with beaded borders, each on stepped square bases, 31 cm high, London 1971, approximately 1130.8 grams (36ozt) **£300-500**



Fine Jewellery, Watches & Silver, 23rd Jan, 2025 09:30

- 327 A pair of late 19th century German/ Austro Hungarian (?) silver candlesticks; Square with tapering knopped stems, urn-shaped capitals and spreading square bases. The bases and stems decorated with repoussée classical figures. Detachable nozzles. 30cm high **£400-600**



- 328 A Middle Eastern white metal woven belt with an adjustable hook buckle, overall 97cm long, 5ozt gross. **£200-300**



- 329 A George III silver half-pint tankard; plain low-bellied form, on circular stepped base; with leaf-capped scroll handle. London 1765 by Francis Crump. 12.5cm high. Approximately 354.57 grams (11.4ozt). **£250-350**



- 330 A pair of Victorian silver Corinthian column candlesticks; the slightly tapering columns with diagonal husk bands; classical capitals and stepped bases with acanthus borders. Integral nozzles. London 1897 and 1898 by William Hutton and Sons. Loaded bases. 28cm high **£300-500**

